

AND SENSITIVE?

HALDER

Erwin Halder KG
Erwin-Halder-Straße 5-9
88480 Achstetten-Bronnen
Germany

T +49 7392 7009-0
F +49 7392 7009-160
info@halder.com
www.halder.com

MADE IN
GERMANY.

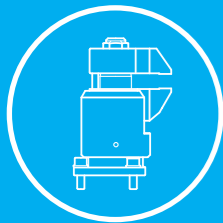
HALDER

COMPLICATED... NO PROBLEM.

FOR EVERY WORKPIECE THE
CORRESPONDING CLAMPING
ELEMENT.

FLOATING CLAMPS NEWS

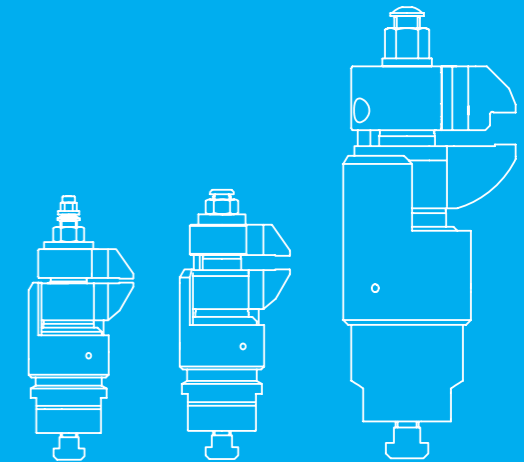
NEW



**COMPACT VERSION.
ESSENTIAL FOR
DISORTION-FREE CLAMPING.**

A big plus is the disortion-free clamping of raw materials. Especially the compact version with reduced height supports.

Supporting and bedding elements complete the range of topics.



THE FLOATING CLAMPS OF HALDER.

The floating clamps are used to clamp and support overdetermined or additional clamping points on components. The floating clamp is spring loaded and contacts the workpiece with a slight spring force. Thereby a low-warpage clamping of components is guaranteed. Even sophisticated workpieces can be clamped for reinforcement to beads, ribs and shackles. This inhibits vibrations during processing.



EN/500/09.18

www.halder.com

OUR PRODUCT RANGE

COMBINED CLAMPING AND LOCKING

M 12 • compact construction



- compact version with reduced height
- supporting force 8 kN

NEW

M 12



- supporting force 8 kN

M 16



- especially suitable for large workpieces
- supporting force 25 kN

ADVANTAGES of combined clamping and locking:

- for robust or large components
- during the clamping process, the workpiece is clamped and simultaneously supported
- the clamping process is carried out with only one nut

SEPARATE CLAMPING AND LOCKING



- compact version with reduced height
- supporting force 8 kN

NEW



- supporting force 8 kN

ADVANTAGES of separate clamping and locking:

- for unstable and extremely pliable components
- the clamping and supporting force can each be determined individually – first the jaws clamp the workpiece in the floating mode, then the clamp is locked and the workpiece is fixed

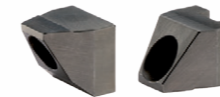
CLAMPING JAWS

Clamping Jaws M 12



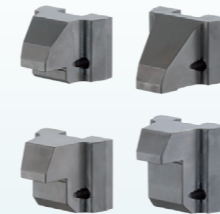
- larger clamping zone can be achieved
- quickly and easily exchangeable
- in the upper clamping jaw with female thread different standard parts can be screwed in as required
- the lower clamping jaw with pivot function adapts to the draughts of the workpiece

Standard Clamping Jaws M 12



- spare part of the included jaws
- quickly and easily exchangeable

Clamping Jaws M 16



- larger clamping zone can be achieved
- quickly and easily exchangeable

Video of floating clamps:



FURTHER PRODUCTS

Supporting Element



The support element is used to support additional clamping points on components.

The supporting height can be adjusted by screwing threaded pins or supports into the female thread of the support bolt.

ADVANTAGES of the supporting element:

- provides additional support without distortion
- helps to eliminate tool vibration
- supports ribs, beads and shackles to reinforce clamped components
- distortion-free support of raw parts

Bedding Support



The bedding support is used to support additional clamping points on components.

The supporting height can be adjusted by screwing threaded pins or supports into the female thread of the support bolt.

ADVANTAGES of the bedding support:

- provides additional support without distortion
- helps to eliminate tool vibration
- compact, low construction
- supports ribs, beads and shackles to reinforce clamped components
- distortion-free support of raw parts
- easy handling - clamping outside of workpiece is also possible by means of adjustable clamping levers