

## Tubular Handles • straight

EH 24321.



### Product Description

Tubular handles are used, for example, on machine doors.

### Material

#### Handle

- Aluminium, anodised
- Aluminium, plastic coated, similar to RAL 9005 black, matt structure

#### Handle shank

- Zinc die-cast
- Zinc die-cast, plastic coated, silver, similar to RAL 9006, matt structure
- Zinc die-cast, plastic coated, black, similar to RAL 9005, matt structure

#### Cap

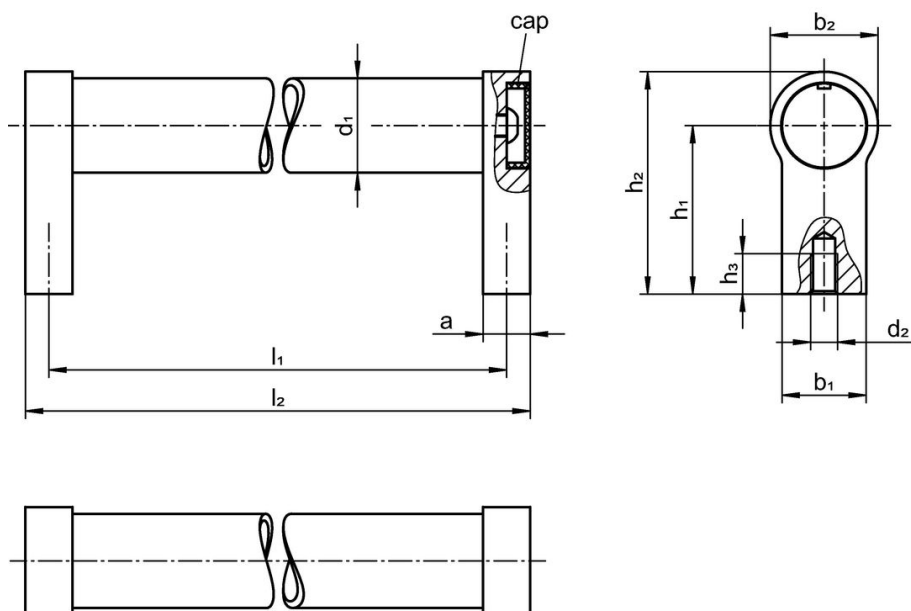
- Plastic, light grey

### More information

#### Notes

Customized design on request.

### Drawing



### Order information

Dimensions									[g]	Art. No.
d <sub>1</sub>	l <sub>1</sub> ±0.25	a	b <sub>1</sub>	d <sub>2</sub>	h <sub>1</sub>	h <sub>2</sub>	h <sub>3</sub> min.	l <sub>2</sub>		
[mm]										
silver similar to RAL 9006										
20	180	12	24	M6	42	54	12	192	190	24321.0205
20	200	12	24	M6	42	54	12	212	200	24321.0210
20	250	12	24	M6	42	54	12	262	200	24321.0215
20	300	12	24	M6	42	54	12	312	230	24321.0220
20	350	12	24	M6	42	54	12	362	210	24321.0225
20	400	12	24	M6	42	54	12	412	290	24321.0230
28	200	14	25	M8	50	66	15	214	340	24321.0235
28	250	14	25	M8	50	66	15	264	360	24321.0240
28	300	14	25	M8	50	66	15	314	390	24321.0245
28	350	14	25	M8	50	66	15	364	420	24321.0250
28	400	14	25	M8	50	66	15	414	460	24321.0255
28	500	14	25	M8	50	66	15	514	480	24321.0260
28	600	14	25	M8	50	66	15	614	500	24321.0265

d <sub>1</sub>	l <sub>1</sub> ±0.25	a	b <sub>1</sub>	Dimensions					[g]	Art. No.
				d <sub>2</sub>	h <sub>1</sub>	h <sub>2</sub>	h <sub>3</sub> min.	l <sub>2</sub>		
[mm]										
30	200	17	27	M8	51	68	15	217	300	<a href="#">24321.0270</a>
30	300	17	27	M8	51	68	15	317	374	<a href="#">24321.0275</a>
30	350	17	27	M8	51	68	15	367	405	<a href="#">24321.0280</a>
30	400	17	27	M8	51	68	15	417	418	<a href="#">24321.0285</a>
30	500	17	27	M8	51	68	15	517	480	<a href="#">24321.0290</a>
30	600	17	27	M8	51	68	15	617	450	<a href="#">24321.0295</a>
black similar to RAL 9005										
20	180	12	24	M6	42	54	12	192	190	<a href="#">24321.0405</a>
20	200	12	24	M6	42	54	12	212	200	<a href="#">24321.0410</a>
20	250	12	24	M6	42	54	12	262	208	<a href="#">24321.0415</a>
20	300	12	24	M6	42	54	12	312	237	<a href="#">24321.0420</a>
20	350	12	24	M6	42	54	12	362	250	<a href="#">24321.0425</a>
20	400	12	24	M6	42	54	12	412	290	<a href="#">24321.0430</a>
28	200	14	25	M8	50	66	15	214	340	<a href="#">24321.0435</a>
28	250	14	25	M8	50	66	15	264	360	<a href="#">24321.0440</a>
28	300	14	25	M8	50	66	15	314	390	<a href="#">24321.0445</a>
28	350	14	25	M8	50	66	15	364	417	<a href="#">24321.0450</a>
28	400	14	25	M8	50	66	15	414	440	<a href="#">24321.0455</a>
28	500	14	25	M8	50	66	15	514	495	<a href="#">24321.0460</a>
28	600	14	25	M8	50	66	15	614	500	<a href="#">24321.0465</a>
30	200	17	27	M8	51	68	15	217	320	<a href="#">24321.0470</a>
30	300	17	27	M8	51	68	15	317	381	<a href="#">24321.0475</a>
30	350	17	27	M8	51	68	15	367	407	<a href="#">24321.0480</a>
30	400	17	27	M8	51	68	15	417	440	<a href="#">24321.0485</a>
30	500	17	27	M8	51	68	15	517	500	<a href="#">24321.0490</a>
30	600	17	27	M8	51	68	15	617	570	<a href="#">24321.0495</a>

## Compliance

### RoHS compliant

Compliant according to Directive 2011/65/EU and Directive 2015/863.

### Does not contain SVHC substances

No SVHC substances with more than 0.1% w/w contained - SVHC list [REACH] as of 27.06.2024.

### Does not contain Proposition 65 substances

No Proposition 65 substances included.

<https://www.P65Warnings.ca.gov/>

### Free from Conflict Minerals

This product does not contain any substances designated as "conflict minerals" such as tantalum, tin, gold or tungsten from the Democratic Republic of Congo or adjacent countries.