

## Locating Bushings · for lifting pins

EH 22350.



### Product Description

Locating bushings are used for quick and safe locating of lifting pins EH 22350 / EH 22351. Corrosion and abrasion resistant.

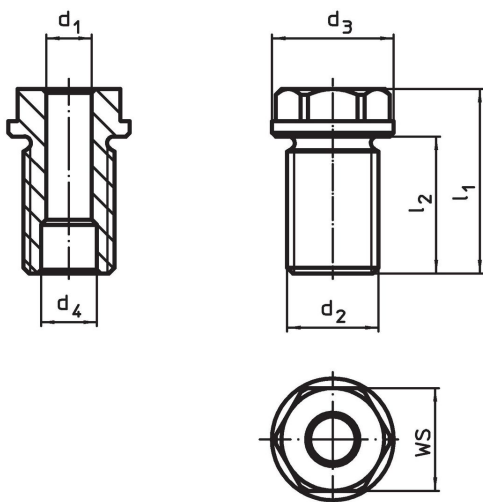
### Material

- Stainless steel 1.4542, precipitation-hardened

### Assembly

Safe tolerances and consistent function.  
Easily incorporated into different materials.  
Can be mounted in blind holes.  
For thin-walled parts, lock nuts are used for assembly.

### Drawing

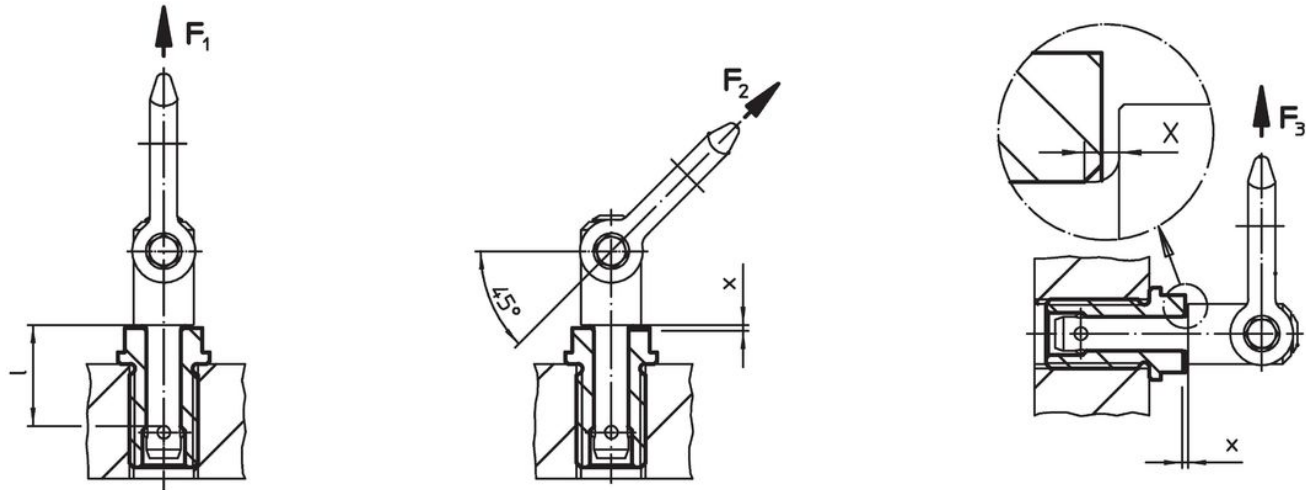


### Order information

Dimensions d <sub>1</sub> H11	Dimensions d <sub>2</sub>	For nominal length	Dimensions				WS	Tightening torque max.	x	Load capacity			For lifting pin	Art. No.	
			d <sub>3</sub> -0.2	d <sub>4</sub> +0.3	l <sub>1</sub>	l <sub>2</sub>				F <sub>1</sub>	F <sub>2</sub>	F <sub>3</sub>			
[mm]	[mm]	[mm]	[mm]				[mm]	[Nm]	[mm]	[kN]			[g]		
8	M16 x 1,5	10	24	9.8	27.5	20	19	90	1.5	1.5	1.2	0.5	22350.0601 / .0701	34	<a href="#">22350.0900</a>
8	M16 x 1,5	15	24	9.8	27.5	20	19	90	1.5	1.5	1.2	0.5	22350.0602 / .0702	34	<a href="#">22350.0902</a>
8	M16	25	24	9.8	37.5	25	19	75	1.5	1.5	1.2	0.5	22350.0604 / .0704	47	<a href="#">22350.0904</a>
8	M16	35	24	9.8	47.5	35	19	75	1.5	1.5	1.2	0.5	22350.0606 / .0706	57	<a href="#">22350.0906</a>
10	M20 x 1,5	15	28	12.2	35.5	24	24	145	1.5	2.7	2.4	2.1	22350.0621 / .0721	71	<a href="#">22350.0910</a>
10	M20 x 1,5	25	28	12.2	35.5	24	24	145	1.5	2.7	2.4	2.1	22350.0623 / .0723	74	<a href="#">22350.0912</a>
10	M20	35	28	12.2	46.0	29	24	130	1.5	2.7	2.4	2.1	22350.0625 / .0725	94	<a href="#">22350.0914</a>
10	M20	50	28	12.2	65.0	49	24	130	1.5	2.7	2.4	2.1	22350.0627 / .0727	117	<a href="#">22350.0916</a>
12	M24 x 1,5	15	32	14.7	35.5	24	27	220	1.5	3.5	3.2	2.8	22350.0631 / .0731	95	<a href="#">22350.0920</a>
12	M24 x 1,5	25	32	14.7	36.5	24	27	220	1.5	3.5	3.2	2.8	22350.0633 / .0733	103	<a href="#">22350.0922</a>
12	M24	35	32	14.7	48.5	36	27	200	1.5	3.5	3.2	2.8	22350.0635 / .0735	120	<a href="#">22350.0924</a>
12	M24	50	32	14.7	72.5	60	27	200	1.5	3.5	3.2	2.8	22350.0637 / .0737	164	<a href="#">22350.0926</a>
16	M30 x 2	25	39	19.2	44.0	29	30	440	1.5	4.8	4.5	4.1	22350.0641 / .0741	164	<a href="#">22350.0930</a>

H11	Dimensions		For nominal length	Dimensions				WS	Tightening torque max.	x	Load capacity			For lifting pin	Art. No.	
	d <sub>1</sub>	d <sub>2</sub>		d <sub>3</sub>	d <sub>4</sub>	l <sub>1</sub>	l <sub>2</sub>				F <sub>1</sub>	F <sub>2</sub>	F <sub>3</sub>			
	[mm]		[mm]	[mm]				[mm]	[Nm]	[mm]	[kN]			[g]		
16	M30		50	39	19.2	66.0	44	30	400	1.5	4.8	4.5	4.1	22350.0643 / .0743	238	22350.0934
16	M30		75	39	19.2	96.0	74	30	400	1.5	4.8	4.5	4.1	22350.0645 / .0745	325	22350.0936
20	M36 x 2		50	43	26.0	70.0	55	36	440	1.5	10.0	8.5	6.5	22350.0673 / .0773	353	22350.0954
20	M36 x 2		75	43	26.0	95.0	80	36	440	1.5	10.0	8.5	6.5	22350.0675 / .0775	470	22350.0956

**Application example**



**Compliance**

**RoHS compliant**

Compliant according to Directive 2011/65/EU and Directive 2015/863.

**Does not contain SVHC substances**

No SVHC substances with more than 0.1% w/w contained - SVHC list [REACH] as of 23.01.2024.

**Does not contain Proposition 65 substances**

No Proposition 65 substances included.  
<https://www.P65Warnings.ca.gov/>

**Free from Conflict Minerals**

This product does not contain any substances designated as "conflict minerals" such as tantalum, tin, gold or tungsten from the Democratic Republic of Congo or adjacent countries.