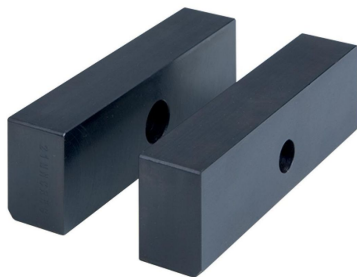


Base Jaws · Soft

EH 1701.



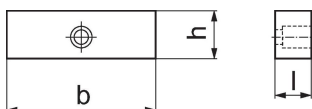
Product Description

- Jaws of case-hardened steel
- For self-made special jaws
- Please order mounting screws separately (Art. No. 1701.300)
- This product is supplied as a pair

Material

- Tool steel

Drawing



Order information

Jaw width	Dimensions			Art. No.
	b	l	h	
[mm]		[mm]		[g]
125	125	25	40	1900
				1701.260

Compliance

RoHS compliant

Compliant according to Directive 2011/65/EU and Directive 2015/863.

Does not contain SVHC substances

No SVHC substances with more than 0.1% w/w contained - SVHC list [REACH] as of 27.06.2024.

Does not contain Proposition 65 substances

No Proposition 65 substances included.

<https://www.P65Warnings.ca.gov/>

Free from Conflict Minerals

This product does not contain any substances designated as "conflict minerals" such as tantalum, tin, gold or tungsten from the Democratic Republic of Congo or adjacent countries.