

## Stops • cylindrical

EH 1551.500 - EH 1651.700

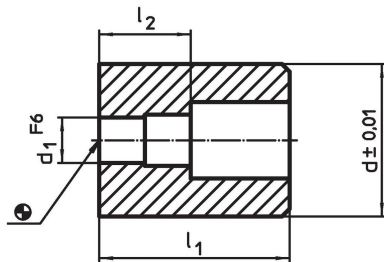


### Product Description

#### Material

- Steel, case-hardened, ground

### Drawing



### Order information

System	Dimensions				[g]	Art. No.
	$l_1$	$l_2$	$d$	$d_1$		
L12	50	24	40	12	400	1551.500
L12	70	24	40	12	552	1551.700
L16	60	25	50	16	737	1651.500
L16	90	25	50	16	1065	1651.700

### Compliance

#### RoHS compliant

Compliant according to Directive 2011/65/EU and Directive 2015/863.

#### Does not contain SVHC substances

No SVHC substances with more than 0.1% w/w contained - SVHC list [REACH] as of 27.06.2024.

#### Does not contain Proposition 65 substances

No Proposition 65 substances included.

<https://www.P65Warnings.ca.gov/>

#### Free from Conflict Minerals

This product does not contain any substances designated as "conflict minerals" such as tantalum, tin, gold or tungsten from the Democratic Republic of Congo or adjacent countries.