

## Hinges • with mounting thread

### 25160.0255



#### Product Description

These hinges are characterised by the compact, robust design and the integrated mounting threads.

#### Material

##### Grub Screw

- Stainless steel

##### Body

- Zinc die-cast, plastic coated, black, similar to RAL 9005, matt structure

##### Axis

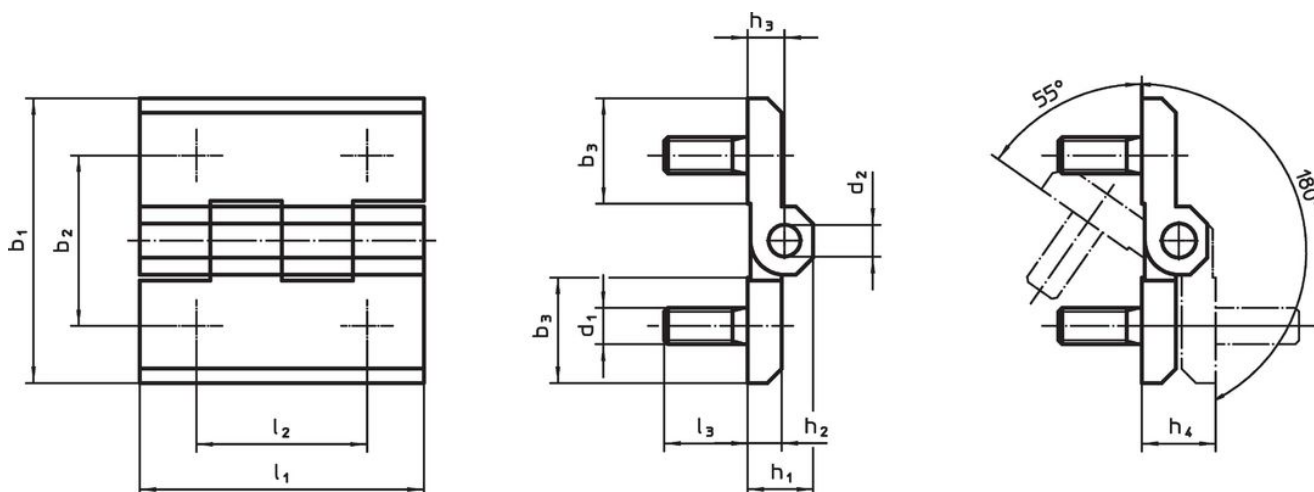
- Stainless steel

#### More information

##### Further products

- Spacer Plates, for hinges

#### Drawing



#### Order information

b <sub>1</sub>	b <sub>2</sub>	b <sub>3</sub>	d <sub>1</sub>	d <sub>2</sub>	Dimensions					l <sub>1</sub>	l <sub>2</sub>	l <sub>3</sub>	[g]	Art. No.	
					h <sub>1</sub>	h <sub>2</sub>	h <sub>3</sub>	h <sub>4</sub> +0.5	[mm]						
Zinc die-cast, black															
50	30	18.5	M6	6	11.5	6	6.5	13	50	30	12	103	25160.0255		

#### Compliance

##### RoHS compliant

Compliant according to Directive 2011/65/EU and Directive 2015/863.

##### Does not contain SVHC substances

No SVHC substances with more than 0.1% w/w contained - SVHC list [REACH] as of 27.06.2024.

##### Does not contain Proposition 65 substances

No Proposition 65 substances included.

<https://www.P65Warnings.ca.gov/>

##### Free from Conflict Minerals

This product does not contain any substances designated as "conflict minerals" such as tantalum, tin, gold or tungsten from the Democratic Republic of Congo or adjacent countries.