

## Supporting Elements · for clamps

23200.0020



### Product Description

Supporting elements are used in combination with clamps.

#### Material

##### Knurled screw

- Brass

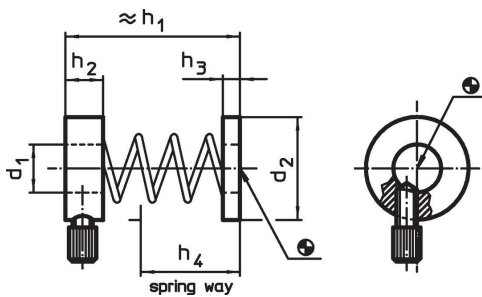
##### Rings

- Aluminium, highly refractory

##### Spring

- Stainless steel

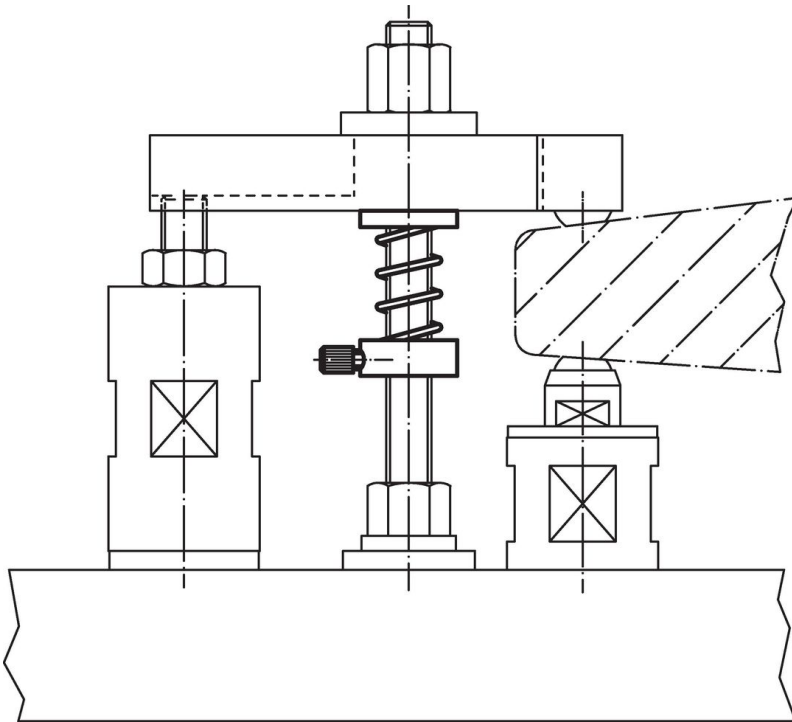
### Drawing



### Order information

d <sub>1</sub>	d <sub>2</sub>	Dimensions				For screw	[g]	Art. No.
		h <sub>1</sub>	h <sub>2</sub>	h <sub>3</sub>	h <sub>4</sub>			
14	28	51	11	5	29	M10, M12	28	23200.0020

Application example



Compliance

**Non-RoHS compliant**

Not compliant according to Directive 2011/65/EU and Directive 2015/863.

**Contains SVHC substances >0,1% w/w**

Contains lead - SVHC list [REACH] as of 27.06.2024.

**Contains Proposition 65 substances**



Lead can cause cancer and reproductive harm from exposure  
<https://www.P65Warnings.ca.gov/>

**Free from Conflict Minerals**

This product does not contain any substances designated as "conflict minerals" such as tantalum, tin, gold or tungsten from the Democratic Republic of Congo or adjacent countries.