

Self-Aligning Pads

22730.0020



Product Description

Self-aligning pads are used as stop, support and thrust pad and are suitable for installation in clamping elements.

Material

Ball

- Ball-bearing steel, hardened, bright

Body

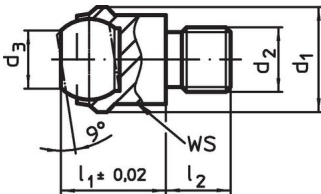
- Heat-treated steel, tempered, phosphated

More information

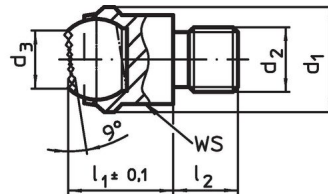
Notes

Ball protected against rotating.
Loading capacity valid for steel and stainless steel designs.

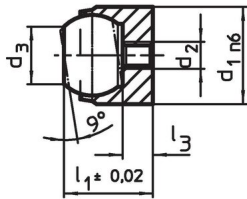
Drawing



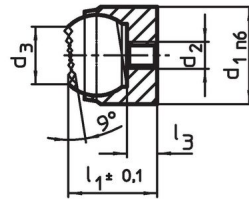
picture 1



picture 2




picture 3



picture 4

Order information

Dimensions						WS	Load capacity for static load max.	Tightening torque max.	 [g]	Art. No.
d ₁	d ₂	d ₃	l ₁	l ₂	Ball diameter					
[mm]						[mm]	[kN]	[Nm]		
with male thread, flat-faced ball, bearing surface plain – picture 1, Heat-treated steel										
20	M12	10.5	18	12	16	17	25	82	43	22730.0020

Application example



Compliance

RoHS compliant

Compliant according to Directive 2011/65/EU and Directive 2015/863.

Does not contain SVHC substances

No SVHC substances with more than 0.1% w/w contained - SVHC list [REACH] as of 27.06.2024.

Does not contain Proposition 65 substances

No Proposition 65 substances included.

<https://www.P65Warnings.ca.gov/>

Free from Conflict Minerals

This product does not contain any substances designated as "conflict minerals" such as tantalum, tin, gold or tungsten from the Democratic Republic of Congo or adjacent countries.