

## Pins · with plastic bearing surface

22691.0335



### Product Description

Pins with plastic bearing surface can be used as protective supports, stops, and thrust pads. This protects high-quality surfaces from damage.

### Material

#### Insert

- Plastic (PEEK), blue

#### Body

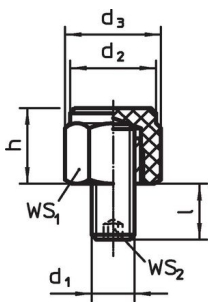
- Stainless steel 1.4305

### More information

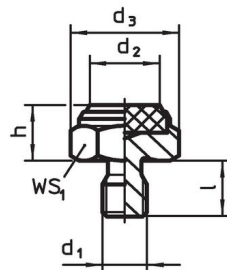
#### Further products

- Seating Elements, with plastic bearing surface, orienting
- Pins

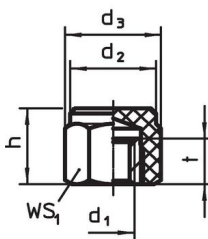
### Drawing



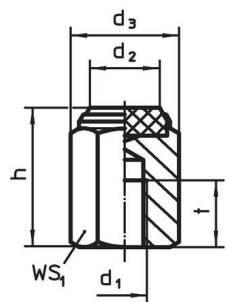
picture 1



picture 2



picture 3



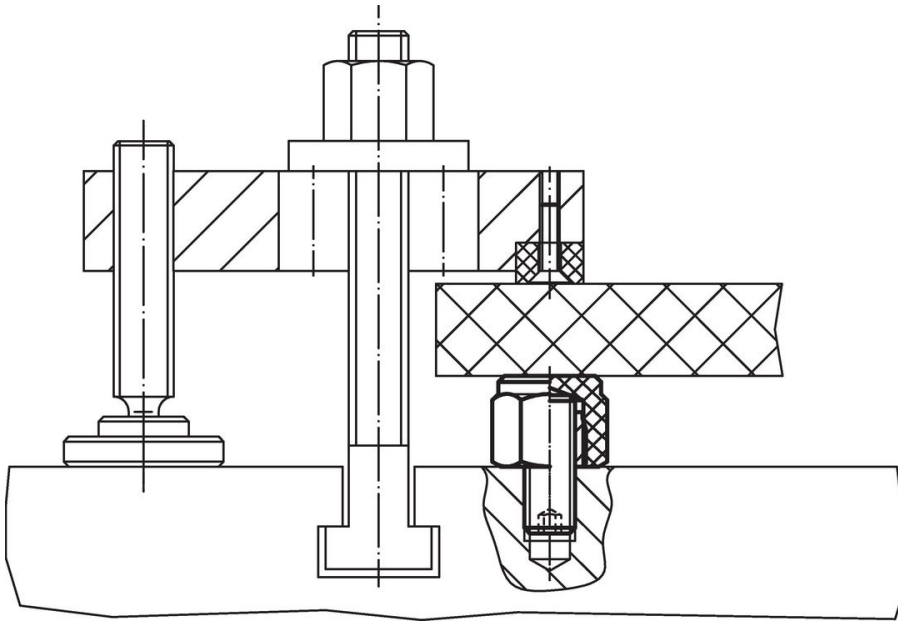
picture 4

### Order information

h ±0.1	d <sub>1</sub>	Dimensions			WS <sub>1</sub> [mm]	Load capacity for static load max. [kN]	Tightening torque <sup>1)</sup> max. [Nm]	Temperature		Weight [g]	Art. No.
		d <sub>2</sub> [mm]	d <sub>3</sub> [mm]	t [mm]				min. [°C]	max. [°C]		
<b>with female thread, plastic insert (PEEK), bearing surface plain – picture 4</b>											
30	M10	14.5	21.9	15	19	15.5	32	-60	250	53	22691.0335

<sup>1)</sup> The tightening torque of bolts with female thread is for threaded pins, quality 8. The bolt has to be tightened over the total thread length.

## Application example



## Compliance

### RoHS compliant

Compliant according to Directive 2011/65/EU and Directive 2015/863.

### Does not contain SVHC substances

No SVHC substances with more than 0.1% w/w contained - SVHC list [REACH] as of 23.01.2024.

### Does not contain Proposition 65 substances

No Proposition 65 substances included.

<https://www.P65Warnings.ca.gov/>

### Free from Conflict Minerals

This product does not contain any substances designated as "conflict minerals" such as tantalum, tin, gold or tungsten from the Democratic Republic of Congo or adjacent countries.