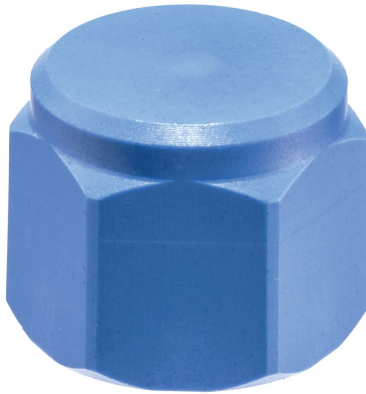


Pins · with plastic bearing surface

22691.0222



Product Description

Pins with plastic bearing surface can be used as protective supports, stops, and thrust pads. This protects high-quality surfaces from damage.

Material

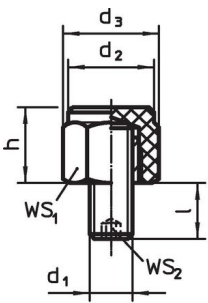
- Insert**
- Plastic (PEEK), blue
- Body**
- Plastic (PEEK), blue

More information

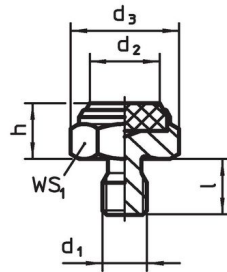
Further products

- Seating Elements, with plastic bearing surface, orienting
- Pins

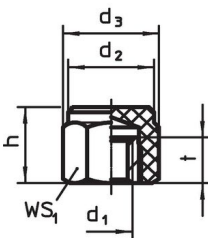
Drawing



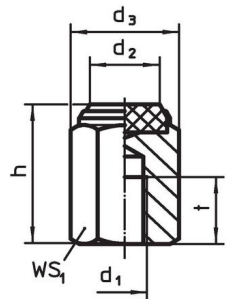
picture 1



picture 2



picture 3

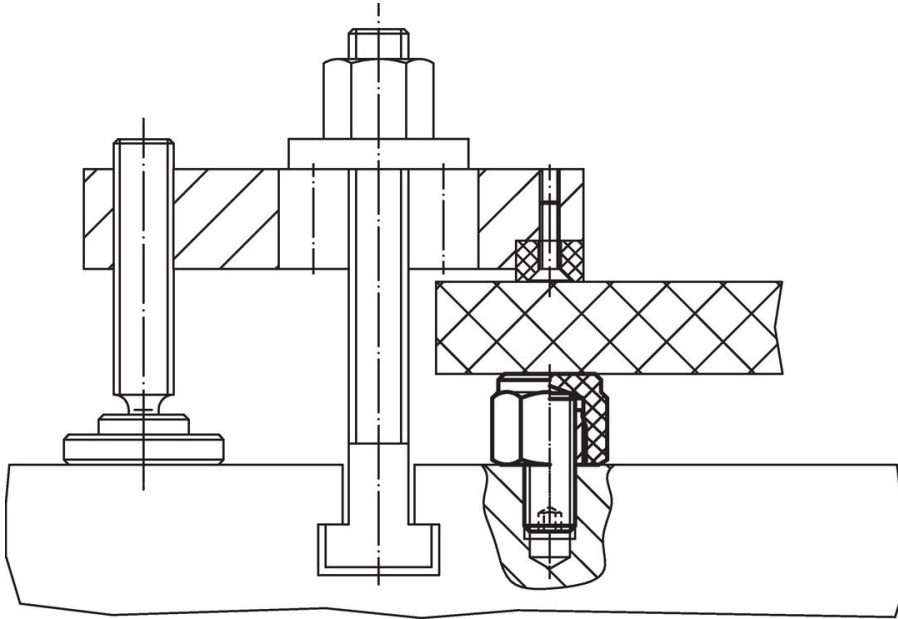


picture 4

Order information

Dimensions					WS <sub>1</sub> [mm]	Load capacity for static load max. [kN]	Tightening torque max. [Nm]	Temperature		Weight [g]	Art. No.
h ±0.1	d <sub>1</sub>	d <sub>2</sub>	d <sub>3</sub>	t				min.	max.		
[mm]								[°C]			
with female thread, body made of plastic (PEEK), bearing surface plain – picture 3											
15	M8	17	19	9	17	8.5	10	-60	250	6.4	22691.0222

## Application example



## Compliance

### RoHS compliant

Compliant according to Directive 2011/65/EU and Directive 2015/863.

### Does not contain SVHC substances

No SVHC substances with more than 0.1% w/w contained - SVHC list [REACH] as of 23.01.2024.

### Does not contain Proposition 65 substances

No Proposition 65 substances included.

<https://www.P65Warnings.ca.gov/>

### Free from Conflict Minerals

This product does not contain any substances designated as "conflict minerals" such as tantalum, tin, gold or tungsten from the Democratic Republic of Congo or adjacent countries.