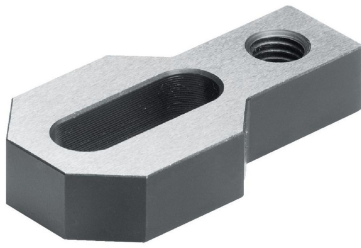


Supporting Plates

1547.900

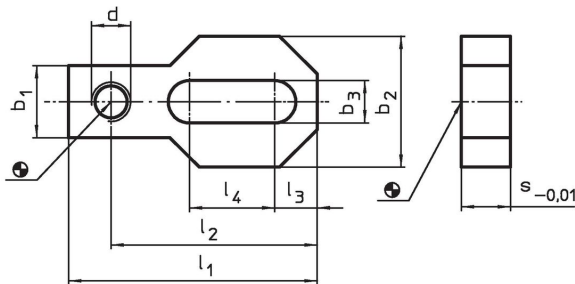


Product Description

Material

- Steel, case-hardened, ground

Drawing



Order information

System	Dimensions									Art. No.	
	l_1	l_2	l_3	l_4	b_1	b_2	b_3	s	d		
L12	76	63	13	26	22	40	13	15	M12	213	1547.900

Compliance

RoHS compliant

Compliant according to Directive 2011/65/EU and Directive 2015/863.

Does not contain SVHC substances

No SVHC substances with more than 0.1% w/w contained - SVHC list [REACH] as of 23.01.2024.

Does not contain Proposition 65 substances

No Proposition 65 substances included.

<https://www.P65Warnings.ca.gov/>

Free from Conflict Minerals

This product does not contain any substances designated as "conflict minerals" such as tantalum, tin, gold or tungsten from the Democratic Republic of Congo or adjacent countries.