

## Thrust Angles

1121.500

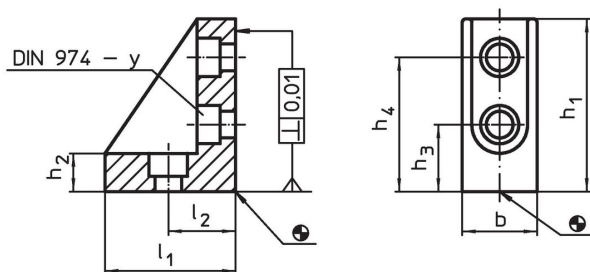


### Product Description


#### Material

- Grey cast iron, phosphatized, ground

### Drawing



### Order information

System	Dimensions							For screws [mm]	y [mm]	 [g]	Art. No.
	b	l <sub>1</sub>	l <sub>2</sub>	h <sub>1</sub> [mm]	h <sub>2</sub>	h <sub>3</sub>	h <sub>4</sub>				
V70	66	67	35	90	20	35	70	M12	12	1501	1121.500

### Compliance

#### RoHS compliant

Compliant according to Directive 2011/65/EU and Directive 2015/863.

#### Does not contain SVHC substances

No SVHC substances with more than 0.1% w/w contained - SVHC list [REACH] as of 23.01.2024.

#### Does not contain Proposition 65 substances

No Proposition 65 substances included.

<https://www.P65Warnings.ca.gov/>

#### Free from Conflict Minerals

This product does not contain any substances designated as "conflict minerals" such as tantalum, tin, gold or tungsten from the Democratic Republic of Congo or adjacent countries.