

Thrust Angles

1021.500

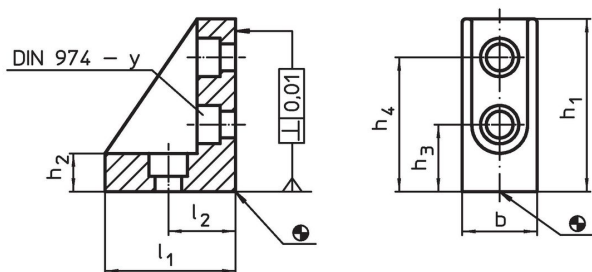


Product Description


Material

- Grey cast iron, phosphatized, ground

Drawing



Order information

System	Dimensions							For screws	y		Art. No.
	b	l ₁	l ₂	h ₁	h ₂	h ₃	h ₄				
V40	38	42	20	52	10.5	20	40	M8	8	303	1021.500

Compliance

RoHS compliant

Compliant according to Directive 2011/65/EU and Directive 2015/863.

Does not contain SVHC substances

No SVHC substances with more than 0.1% w/w contained - SVHC list [REACH] as of 27.06.2024.

Does not contain Proposition 65 substances

No Proposition 65 substances included.

<https://www.P65Warnings.ca.gov/>

Free from Conflict Minerals

This product does not contain any substances designated as "conflict minerals" such as tantalum, tin, gold or tungsten from the Democratic Republic of Congo or adjacent countries.