

Ball Knobs • metal types similar to DIN 319

EH 24561.



Product Description

Material

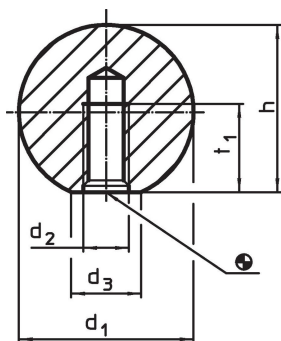
- Steel, polished, bright
- Stainless steel 1.4305, dull blasted
- Aluminium, polished

More information

Notes

Supplement DIN 319 Form C about metallic versions.

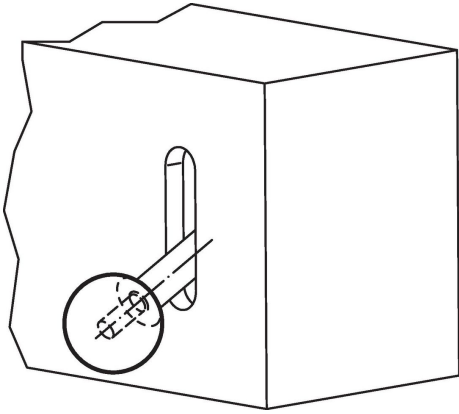
Drawing



Order information

d ₁	d ₂	Dimensions		t ₁ min.	[g]	Art. No.
		d ₃ ~ [mm]	h ~			
Steel						
16	M 4	8	15.0	7.0	16	24561.0016
20	M 5	12	18.0	9.0	26	24561.0020
25	M 6	15	22.5	11.0	58	24561.0025
32	M 8	18	29.0	14.5	116	24561.0032
40	M10	22	37.0	18.0	241	24561.0040
50	M12	27	46.0	21.0	475	24561.0050
Stainless steel						
16	M 4	8	15.0	7.0	16	24561.0216
20	M 5	12	18.0	9.0	26	24561.0220
25	M 6	15	22.5	11.0	58	24561.0225
32	M 8	18	29.0	14.5	116	24561.0232
40	M10	22	37.0	18.0	241	24561.0240
Aluminium Al						
16	M 4	8	15.0	7.0	16	24561.0116
20	M 5	12	18.0	9.0	26	24561.0120
25	M 6	15	22.5	11.0	58	24561.0125
32	M 8	18	29.0	14.5	116	24561.0132
40	M10	22	37.0	18.0	241	24561.0140
50	M12	27	46.0	21.0	475	24561.0150

Application example



Compliance

For detailed compliance information please select the desired article number.