

Supporting Elements · for clamps

EH 23200.



Product Description

Supporting elements are used in combination with clamps.

Material

Knurled screw

- Brass

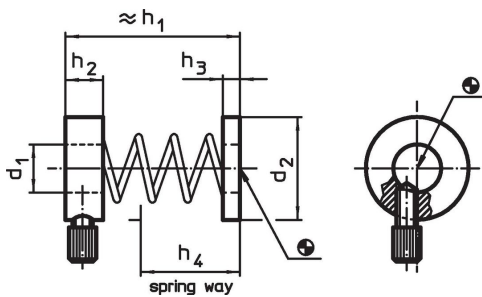
Rings

- Aluminium, highly refractory

Spring

- Stainless steel

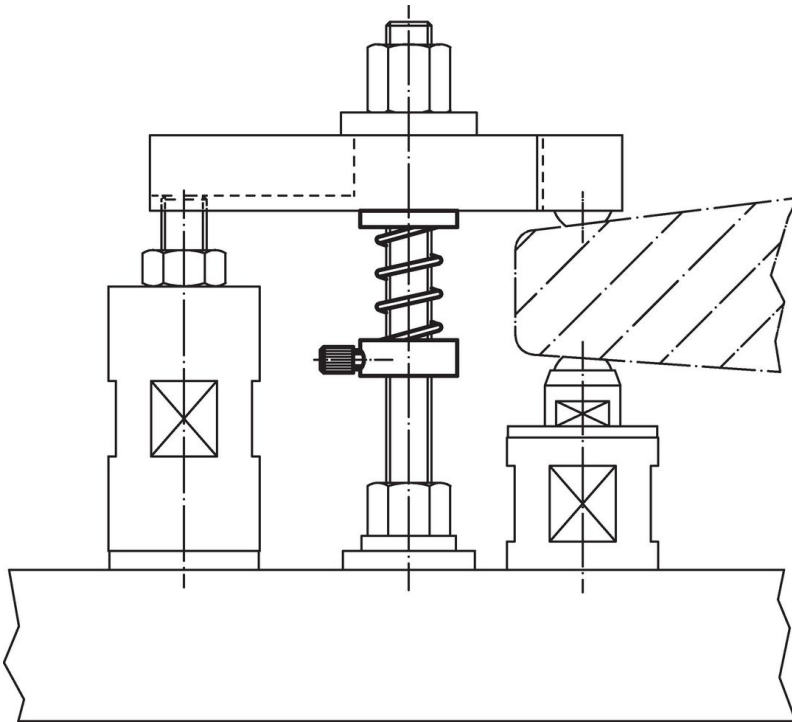
Drawing



Order information

d ₁	d ₂	Dimensions				For screw	[g]	Art. No.
		h ₁ [mm]	h ₂	h ₃	h ₄			
8.5	24	35	11	5	14	M 6, M8	24	23200.0010
14.0	28	51	11	5	29	M10, M12	28	23200.0020
16.5	35	60	12	5	35	M16	44	23200.0030

Application example



Compliance

Non-RoHS compliant

Not compliant according to Directive 2011/65/EU and Directive 2015/863.

Contains SVHC substances >0,1% w/w

Contains lead - SVHC list [REACH] as of 23.01.2024.

Contains Proposition 65 substances



Lead can cause cancer and reproductive harm from exposure
<https://www.P65Warnings.ca.gov/>

Free from Conflict Minerals

This product does not contain any substances designated as "conflict minerals" such as tantalum, tin, gold or tungsten from the Democratic Republic of Congo or adjacent countries.