

Positioning Bushings • without collar, DIN 179 A

EH 23112.



Product Description

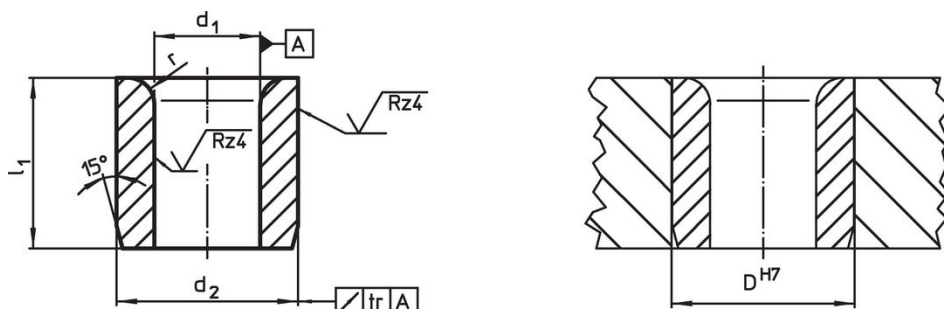
Positioning or drill bushings are used to drill repetitive holes in the same location to ensure repeatability.

The hardened and ground positioning bushings can be used as wear-resistant guide for drills, shafts etc.

Material


- Case-hardened steel, case-hardened


Drawing



Order information

Dimensions				Location hole	[g]	Art. No.
d ₁ F7	l ₁ [mm]	d ₂ n6	r	D H7 [mm]		
2.0	6	5	1.0	5	0.7	23112.0520
2.0	9	5	1.0	5	1.1	23112.0521
2.1	6	5	1.0	5	0.7	23112.0522
2.1	9	5	1.0	5	1.1	23112.0523
2.5	6	5	1.0	5	0.7	23112.0524
2.5	9	5	1.0	5	1.0	23112.0525
3.0	8	6	1.0	6	1.9	23112.0530
3.0	12	6	1.0	6	1.9	23112.0531
3.0	16	6	1.0	6	2.6	23112.0532
3.1	8	6	1.0	6	1.2	23112.0533
3.1	12	6	1.0	6	1.9	23112.0534
3.1	16	6	1.0	6	3.2	23112.0535
3.5	8	7	1.0	7	2.4	23112.0536
3.5	12	7	1.0	7	2.6	23112.0537
3.5	16	7	1.0	7	3.6	23112.0538
4.0	8	7	1.0	7	1.5	23112.0540
4.0	12	7	1.0	7	3.0	23112.0541
4.0	16	7	1.0	7	3.2	23112.0542
4.1	8	8	1.0	8	2.2	23112.0543
4.1	12	8	1.0	8	3.4	23112.0544
4.1	16	8	1.0	8	4.6	23112.0545
4.5	8	8	1.0	8	2.1	23112.0546
4.5	12	8	1.0	8	3.1	23112.0547
4.5	16	8	1.0	8	4.2	23112.0548
5.0	8	8	1.0	8	1.8	23112.0550
5.0	12	8	1.0	8	3.4	23112.0551
5.0	16	8	1.0	8	3.7	23112.0552
5.1	10	10	1.5	10	4.4	23112.0553
5.1	16	10	1.5	10	7.1	23112.0554
5.1	20	10	1.5	10	8.9	23112.0555
5.5	10	10	1.5	10	4.1	23112.0556

d ₁ F7	Dimensions			r	Location hole D H7 [mm]	 [g]	Art. No.
	l ₁ [mm]	d ₂ n6					
5.5	16	10		1.5	10	6.7	23112.0557
5.5	20	10		1.5	10	8.4	23112.0558
6.0	10	10		1.5	10	3.8	23112.0560
6.0	16	10		1.5	10	6.1	23112.0561
6.0	20	10		1.5	10	7.7	23112.0562
6.1	10	12		1.5	12	6.3	23112.0563
6.1	16	12		1.5	12	10.0	23112.0564
6.1	20	12		1.5	12	13.0	23112.0565
6.5	10	12		1.5	12	6.0	23112.0566
6.5	16	12		1.5	12	9.7	23112.0567
6.5	20	12		1.5	12	12.0	23112.0568
7.0	10	12		1.5	12	5.6	23112.0570
7.0	16	12		1.5	12	9.1	23112.0571
7.0	20	12		1.5	12	11.0	23112.0572
7.1	10	12		1.5	12	5.5	23112.0573
7.1	16	12		1.5	12	9.0	23112.0574
7.1	20	12		1.5	12	11.0	23112.0575
7.5	10	12		1.5	12	5.1	23112.0576
7.5	16	12		1.5	12	8.4	23112.0577
7.5	20	12		1.5	12	11.0	23112.0578
8.0	10	12		1.5	12	4.7	23112.0580
8.0	16	12		1.5	12	7.6	23112.0581
8.0	20	12		1.5	12	9.6	23112.0582
8.1	12	15		2.0	15	11.0	23112.0583
8.1	20	15		2.0	15	19.0	23112.0584
8.1	25	15		2.0	15	24.0	23112.0585
8.5	12	15		2.0	15	11.0	23112.0586
8.5	20	15		2.0	15	18.0	23112.0587
8.5	25	15		2.0	15	23.0	23112.0588
9.0	12	15		2.0	15	10.0	23112.0590
9.0	20	15		2.0	15	17.0	23112.0591
9.0	25	15		2.0	15	22.0	23112.0592
9.1	12	15		2.0	15	10.0	23112.0593
9.1	20	15		2.0	15	17.0	23112.0594
9.1	25	15		2.0	15	21.0	23112.0595
9.5	12	15		2.0	15	9.5	23112.0596
9.5	20	15		2.0	15	16.0	23112.0597
9.5	25	15		2.0	15	20.0	23112.0598
10.0	12	15		2.0	15	8.8	23112.0600
10.0	20	15		2.0	15	15.0	23112.0601
10.0	25	15		2.0	15	19.0	23112.0602
10.1	12	18		2.0	18	16.0	23112.0603
10.1	20	18		2.0	18	27.0	23112.0604
10.1	25	18		2.0	18	33.0	23112.0605
10.5	12	18		2.0	18	15.0	23112.0606
10.5	20	18		2.0	18	26.0	23112.0607
10.5	25	18		2.0	18	32.0	23112.0608
11.0	12	18		2.0	18	14.0	23112.0610
11.0	20	18		2.0	18	24.0	23112.0611
11.0	25	18		2.0	18	31.0	23112.0612
11.1	12	18		2.0	18	14.0	23112.0613
11.1	20	18		2.0	18	24.0	23112.0614
11.1	25	18		2.0	18	30.0	23112.0615
11.5	12	18		2.0	18	13.0	23112.0616
11.5	20	18		2.0	18	23.0	23112.0617
11.5	25	18		2.0	18	29.0	23112.0618
12.0	12	18		2.0	18	13.0	23112.0620
12.0	20	18		2.0	18	22.0	23112.0621
12.0	25	18		2.0	18	27.0	23112.0622
12.1	16	22		2.0	22	32.0	23112.0623
12.1	28	22		2.0	22	57.0	23112.0624

d ₁ F7	Dimensions			r	Location hole D H7 [mm]	 [g]	Art. No.
	l ₁ [mm]	d ₂ n6					
12.1	36	22		2.0	22	74.0	23112.0625
12.5	16	22		2.0	22	31.0	23112.0626
12.5	28	22		2.0	22	66.0	23112.0627
12.5	36	22		2.0	22	69.0	23112.0628
13.0	16	22		2.0	22	30.0	23112.0630
13.0	28	22		2.0	22	53.0	23112.0631
13.0	36	22		2.0	22	69.0	23112.0632
14.0	16	22		2.0	22	27.0	23112.0640
14.0	28	22		2.0	22	49.0	23112.0641
14.0	36	22		2.0	22	63.0	23112.0642
15.0	16	22		2.0	22	24.0	23112.0650
15.0	28	22		2.0	22	44.0	23112.0651
15.0	36	22		2.0	22	56.0	23112.0652
16.0	16	26		2.0	26	45.0	23112.0660
16.0	28	26		2.0	26	71.0	23112.0661
16.0	36	26		2.0	26	92.0	23112.0662
16.1	16	26		2.0	26	40.0	23112.0663
16.1	28	26		2.0	26	71.0	23112.0664
16.1	36	26		2.0	26	91.0	23112.0665
16.5	16	26		2.0	26	39.0	23112.0666
16.5	28	26		2.0	26	68.0	23112.0667
16.5	36	26		2.0	26	88.0	23112.0668
17.0	16	26		2.0	26	37.0	23112.0671
17.0	28	26		2.0	26	65.0	23112.0672
17.0	36	26		2.0	26	84.0	23112.0673
18.0	16	26		2.0	26	33.0	23112.0681
18.0	28	26		2.0	26	59.0	23112.0682
18.0	36	26		2.0	26	76.0	23112.0683
19.0	20	30		3.0	30	64.0	23112.0691
19.0	36	30		3.0	30	117.0	23112.0692
19.0	45	30		3.0	30	147.0	23112.0693
20.0	20	30		3.0	30	59.0	23112.0701
20.0	36	30		3.0	30	108.0	23112.0702
20.0	45	30		3.0	30	136.0	23112.0703
20.1	20	30		3.0	30	59.0	23112.0704
20.1	36	30		3.0	30	108.0	23112.0705
20.1	45	30		3.0	30	135.0	23112.0706
22.0	20	30		3.0	30	49.0	23112.0721
22.0	36	30		3.0	30	90.0	23112.0722
22.0	45	30		3.0	30	113.0	23112.0723
25.0	20	35		3.0	35	71.0	23112.0751
25.0	36	35		3.0	35	130.0	23112.0752
25.0	45	35		3.0	35	163.0	23112.0753
30.0	25	42		3.0	42	129.0	23112.0801
30.0	45	42		3.0	42	235.0	23112.0802
30.0	56	42		3.0	42	293.0	23112.0803

Compliance

RoHS compliant

Contains lead - compliant according to exceptions 6a / 6b / 6c.

Contains SVHC substances >0,1% w/w

Contains lead - SVHC list [REACH] as of 23.01.2024.

Contains Proposition 65 substances



Lead can cause cancer and reproductive harm from exposure
<https://www.P65Warnings.ca.gov/>

Free from Conflict Minerals

This product does not contain any substances designated as "conflict minerals" such as tantalum, tin, gold or tungsten from the Democratic Republic of Congo or adjacent countries.