

Thrust Screws • with plastic pad

EH 22760.



Product Description

Thrust screws can be used for a gentle clamping or pressing of thread spindles, axes, shafts and surface treated parts.

Material

Pad

- Thermoplastic POM, white

Screw

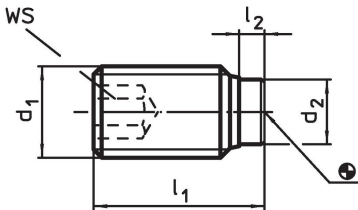
- Steel, blackened
- Stainless steel 1.4305

More information

Further products

- Thrust Screws, with brass pad

Drawing



Order information

d ₁	Dimensions			WS	Temperature		Weight [g]	Art. No.
	l ₁	l ₂	d ₂		min.	max.		
[mm]			[mm]		[°C]			
Stainless steel								
M 3	3.8	0.8	1.5	1.5	-30	80	0.1	22760.0632
M 3	5.8	0.8	1.5	1.5	-30	80	0.3	22760.0634
M 3	8.8	0.8	1.5	1.5	-30	80	0.4	22760.0636
M 3	10.8	0.8	1.5	1.5	-30	80	0.4	22760.0638
M 4	7.0	1.0	2.0	1.5	-30	80	0.3	22760.0642
M 4	9.0	1.0	2.0	2.0	-30	80	0.5	22760.0643
M 4	11.0	1.0	2.0	2.0	-30	80	0.7	22760.0644
M 4	13.0	1.0	2.0	2.0	-30	80	0.7	22760.0645
M 4	17.0	1.0	2.0	2.0	-30	80	1.1	22760.0646
M 5	9.0	1.0	3.0	2.5	-30	80	0.7	22760.0652
M 5	11.0	1.0	3.0	2.5	-30	80	0.9	22760.0653
M 5	13.0	1.0	3.0	2.5	-30	80	1.2	22760.0654
M 5	17.0	1.0	3.0	2.5	-30	80	1.6	22760.0655
M 5	21.0	1.0	3.0	2.5	-30	80	2.2	22760.0656
M 6	11.3	1.3	3.5	3.0	-30	80	1.3	22760.0662
M 6	13.3	1.3	3.5	3.0	-30	80	1.7	22760.0663
M 6	17.3	1.3	3.5	3.0	-30	80	2.2	22760.0664
M 6	21.3	1.3	3.5	3.0	-30	80	3.0	22760.0665
M 6	26.3	1.3	3.5	3.0	-30	80	3.8	22760.0666
M 6	33.3	1.3	3.5	3.0	-30	80	5.1	22760.0667
M 8	13.6	1.6	5.0	4.0	-30	80	2.5	22760.0682
M 8	17.6	1.6	5.0	4.0	-30	80	3.7	22760.0683
M 8	21.6	1.6	5.0	4.0	-30	80	5.0	22760.0684
M 8	26.6	1.6	5.0	4.0	-30	80	6.5	22760.0685
M 8	33.6	1.6	5.0	4.0	-30	80	8.8	22760.0686
M 8	41.6	1.6	5.0	4.0	-30	80	11.0	22760.0687
M10	17.9	1.9	6.5	5.0	-30	80	5.4	22760.0702

d ₁	Dimensions			WS [mm]	min. [°C]	max.	[g]	Art. No.
	l ₁ ~ [mm]	l ₂ ~	d ₂					
M10	21.9	1.9	6.5	5.0	-30	80	7.2	22760.0703
M10	26.9	1.9	6.5	5.0	-30	80	9.9	22760.0704
M10	33.9	1.9	6.5	5.0	-30	80	13.0	22760.0705
M10	41.9	1.9	6.5	5.0	-30	80	17.0	22760.0706
M10	51.9	1.9	6.5	5.0	-30	80	22.0	22760.0707
M12	22.1	2.1	8.0	6.0	-30	80	9.1	22760.0722
M12	27.1	2.1	8.0	6.0	-30	80	13.0	22760.0723
M12	34.1	2.1	8.0	6.0	-30	80	18.0	22760.0724
M12	42.1	2.1	8.0	6.0	-30	80	23.0	22760.0725
M12	52.1	2.1	8.0	6.0	-30	80	30.0	22760.0726
M12	65.1	2.1	8.0	6.0	-30	80	40.0	22760.0727
Steel								
M 4	7.0	1.0	2.0	1.5	-30	80	0.3	22760.0242
M 4	9.0	1.0	2.0	1.5	-30	80	0.4	22760.0243
M 4	11.0	1.0	2.0	1.5	-30	80	0.6	22760.0244
M 4	13.0	1.0	2.0	1.5	-30	80	0.7	22760.0245
M 4	17.0	1.0	2.0	1.5	-30	80	1.0	22760.0246
M 4	21.0	1.0	2.0	1.5	-30	80	1.3	22760.0247
M 5	9.0	1.0	3.0	2.5	-30	80	0.7	22760.0252
M 5	11.0	1.0	3.0	2.5	-30	80	0.9	22760.0253
M 5	13.0	1.0	3.0	2.5	-30	80	1.2	22760.0254
M 5	17.0	1.0	3.0	2.5	-30	80	1.6	22760.0255
M 5	21.0	1.0	3.0	2.5	-30	80	2.2	22760.0256
M 5	26.0	1.0	3.0	2.5	-30	80	2.6	22760.0257
M 6	11.3	1.3	3.5	3.0	-30	80	1.3	22760.0262
M 6	13.3	1.3	3.5	3.0	-30	80	1.7	22760.0263
M 6	17.3	1.3	3.5	3.0	-30	80	2.2	22760.0264
M 6	21.3	1.3	3.5	3.0	-30	80	3.0	22760.0265
M 6	26.3	1.3	3.5	3.0	-30	80	3.8	22760.0266
M 6	33.3	1.3	3.5	3.0	-30	80	5.1	22760.0267
M 6	41.3	1.3	3.5	3.0	-30	80	6.3	22760.0268
M 6	51.3	1.3	3.5	3.0	-30	80	7.9	22760.0270
M 8	13.6	1.6	5.0	4.0	-30	80	2.5	22760.0282
M 8	17.6	1.6	5.0	4.0	-30	80	3.7	22760.0283
M 8	21.6	1.6	5.0	4.0	-30	80	5.0	22760.0284
M 8	26.6	1.6	5.0	4.0	-30	80	6.5	22760.0285
M 8	33.6	1.6	5.0	4.0	-30	80	8.8	22760.0286
M 8	41.6	1.6	5.0	4.0	-30	80	11.0	22760.0287
M 8	51.6	1.6	5.0	4.0	-30	80	14.0	22760.0288
M 8	64.6	1.6	5.0	4.0	-30	80	18.0	22760.0290
M10	17.9	1.9	6.5	5.0	-30	80	5.4	22760.0302
M10	21.9	1.9	6.5	5.0	-30	80	7.2	22760.0303
M10	26.9	1.9	6.5	5.0	-30	80	9.9	22760.0304
M10	33.9	1.9	6.5	5.0	-30	80	13.0	22760.0305
M10	41.9	1.9	6.5	5.0	-30	80	17.0	22760.0306
M10	51.9	1.9	6.5	5.0	-30	80	22.0	22760.0307
M10	64.9	1.9	6.5	5.0	-30	80	28.0	22760.0308
M10	81.9	1.9	6.5	5.0	-30	80	36.0	22760.0310
M12	22.1	2.1	8.0	6.0	-30	80	9.1	22760.0322
M12	27.1	2.1	8.0	6.0	-30	80	13.0	22760.0323
M12	34.1	2.1	8.0	6.0	-30	80	18.0	22760.0324
M12	42.1	2.1	8.0	6.0	-30	80	23.0	22760.0325
M12	52.1	2.1	8.0	6.0	-30	80	30.0	22760.0326
M12	65.1	2.1	8.0	6.0	-30	80	40.0	22760.0327
M12	82.1	2.1	8.0	6.0	-30	80	53.0	22760.0330
M12	102.1	2.1	8.0	6.0	-30	80	66.0	22760.0332

Compliance

For detailed compliance information please select the desired article number.