

## Index Plungers · with pull-ring EH 22120.



### Product Description

Index plungers are used for indexing bores.

#### Material

##### Body

- Steel, blackened
- Stainless steel 1.4305

##### Locking pin

- Stainless steel 1.4305, nickel-plated

##### Pull-ring

- Stainless steel 1.4310

#### Assembly

Lock nuts have to be purchased separately.

#### Operation

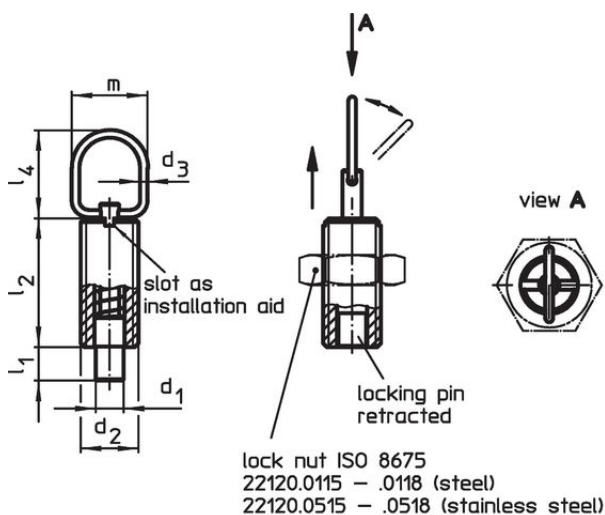
When using the model with locking mechanism, you turn the pull-ring by 90° after retracting the locking pin and secure the ring using the notched catch (if the locking pin should not overhang).

#### More information

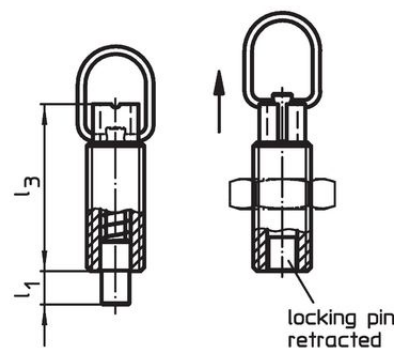
#### Further products

- Mounting Blocks, for index bolts and index plungers, die-cast
- Locating Bushings, for index bolts and index plungers
- Distance Collars, for index plungers
- Mounting Blocks, for index bolts and index plungers

### Drawing



picture 1




with locking

picture 2

### Order information






Dimensions								Stroke s [mm]	Spring load <sup>1)</sup> F <sub>1</sub> ~ F <sub>2</sub> [N]		max. [°C]	[g]	Art. No.
d <sub>1</sub> -0.05 -0.1	d <sub>2</sub>	d <sub>3</sub>	l <sub>1</sub> min. [mm]	l <sub>2</sub>	l <sub>3</sub>	l <sub>4</sub>	m						
<b>without locking – picture 1, Steel</b>													
5	M10	1.5	5	22	28	23	18	5	5	15	250	11	22120.1310
5	M10 x 1	1.5	5	22	28	23	18	5	5	15	250	12	22120.1312
6	M12	2.0	6	24	31	25	22	6	6	21	250	18	22120.1314
6	M12 x 1,5	2.0	6	24	31	25	22	6	6	21	250	18	22120.1316

<sup>1)</sup> statistical average value

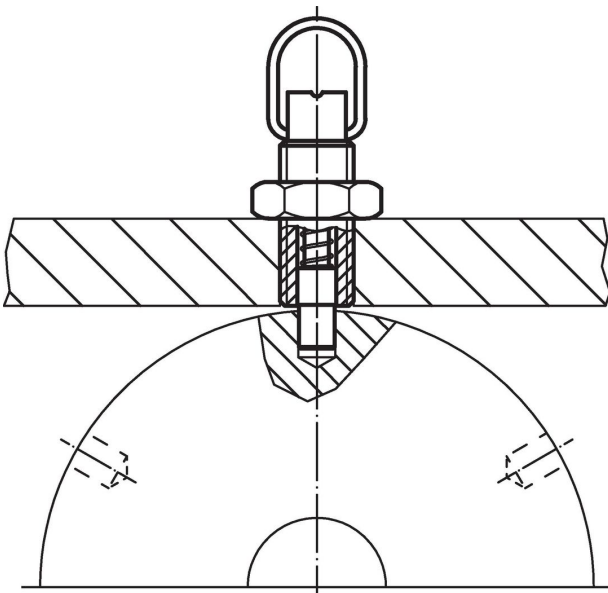
d <sub>1</sub> -0.05 -0.1	d <sub>2</sub>	Dimensions						Stroke s [mm]	Spring load <sup>1)</sup>		max. [°C]	 [g]	Art. No.
		d <sub>3</sub>	l <sub>1</sub> min. [mm]	l <sub>2</sub>	l <sub>3</sub>	l <sub>4</sub>	m		F <sub>1</sub> ~ [N]	F <sub>2</sub> ~ [N]			
8	M16	2.0	9	34	44	25	22	9	7	27	250	43	22120.1318
8	M16 x 1,5	2.0	9	34	44	25	22	9	7	27	250	45	22120.1320
10	M16	2.0	9	34	44	25	22	9	7	27	250	45	22120.1322
10	M16 x 1,5	2.0	9	34	44	25	22	9	7	27	250	47	22120.1324
<b>without locking – picture 1, Stainless steel</b>													
5	M10	1.5	5	22	28	23	18	5	5	15	250	11	22120.1410
5	M10 x 1	1.5	5	22	28	23	18	5	5	15	250	12	22120.1412
6	M12	2.0	6	24	31	25	22	6	6	21	250	18	22120.1414
6	M12 x 1,5	2.0	6	24	31	25	22	6	6	21	250	18	22120.1416
8	M16	2.0	9	34	44	25	22	9	7	27	250	43	22120.1418
8	M16 x 1,5	2.0	9	34	44	25	22	9	7	27	250	45	22120.1420
10	M16	2.0	9	34	44	25	22	9	7	27	250	45	22120.1422
10	M16 x 1,5	2.0	9	34	44	25	22	9	7	27	250	47	22120.1424
<b>with locking – picture 2, Steel</b>													
5	M10	1.5	5	22	28	23	18	5	5	15	250	12	22120.1340
5	M10 x 1	1.5	5	22	28	23	18	5	5	15	250	13	22120.1342
6	M12	2.0	6	24	31	25	22	6	6	21	250	19	22120.1344
6	M12 x 1,5	2.0	6	24	31	25	22	6	6	21	250	20	22120.1346
8	M16	2.0	9	34	44	25	22	9	7	27	250	48	22120.1348
8	M16 x 1,5	2.0	9	34	44	25	22	9	7	27	250	51	22120.1350
10	M16	2.0	9	34	44	25	22	9	7	27	250	50	22120.1352
10	M16 x 1,5	2.0	9	34	44	25	22	9	7	27	250	53	22120.1354
<b>with locking – picture 2, Stainless steel</b>													
5	M10	1.5	5	22	28	23	18	5	5	15	250	12	22120.1440
5	M10 x 1	1.5	5	22	28	23	18	5	5	15	250	13	22120.1442
6	M12	2.0	6	24	31	25	22	6	6	21	250	19	22120.1444
6	M12 x 1,5	2.0	6	24	31	25	22	6	6	21	250	20	22120.1446
8	M16	2.0	9	34	44	25	22	9	7	27	250	48	22120.1448
8	M16 x 1,5	2.0	9	34	44	25	22	9	7	27	250	51	22120.1450
10	M16	2.0	9	34	44	25	22	9	7	27	250	50	22120.1452
10	M16 x 1,5	2.0	9	34	44	25	22	9	7	27	250	53	22120.1454

<sup>1)</sup> statistical average value

## Accessories

	Dimensions d <sub>2</sub> [mm]	Wrench size [mm]	 [g]	Art. No.
<b>Lock nuts ISO 4035, Steel</b>				
	M10	16	5.3	<a href="#">22120.0706</a>
	M12	18	7.6	<a href="#">22120.0708</a>
	M16	24	18.0	<a href="#">22120.0710</a>
<b>Lock nuts ISO 4035, Stainless steel</b>				
	M10	16	5.3	<a href="#">22120.0716</a>
	M12	18	7.6	<a href="#">22120.0718</a>
	M16	24	18.0	<a href="#">22120.0720</a>
<b>Lock nuts ISO 8675 (DIN 439), Steel</b>				
	M10 x 1	16	5.2	<a href="#">22120.0115</a>
	M12 x 1,5	18	7.5	<a href="#">22120.0116</a>
	M16 x 1,5	24	15.0	<a href="#">22120.0118</a>
<b>Lock nuts ISO 8675 (DIN 439), Stainless steel</b>				
	M10 x 1	16	5.2	<a href="#">22120.0515</a>
	M12 x 1,5	18	7.5	<a href="#">22120.0516</a>
	M16 x 1,5	24	15.0	<a href="#">22120.0518</a>

## Application example



## Compliance

For detailed compliance information please select the desired article number.