

Index Plungers · simple finish

EH 22120.



Product Description

Application is limited to cases not requiring a precise positioning.
Simple finish with very small dimensions.

Material

Body

- Steel, zinc-plated by galvanization
- Stainless steel 1.4305

Locking pin

- Stainless steel 1.4305

Knob

- Thermoplastic PA 6, black, dull

Pull-ring

- Stainless steel 1.4310

Operation

When using locking index plungers, the knob is pulled-out, turned 90° and secured by a notched catch (when locking pin should not overhang).

More information

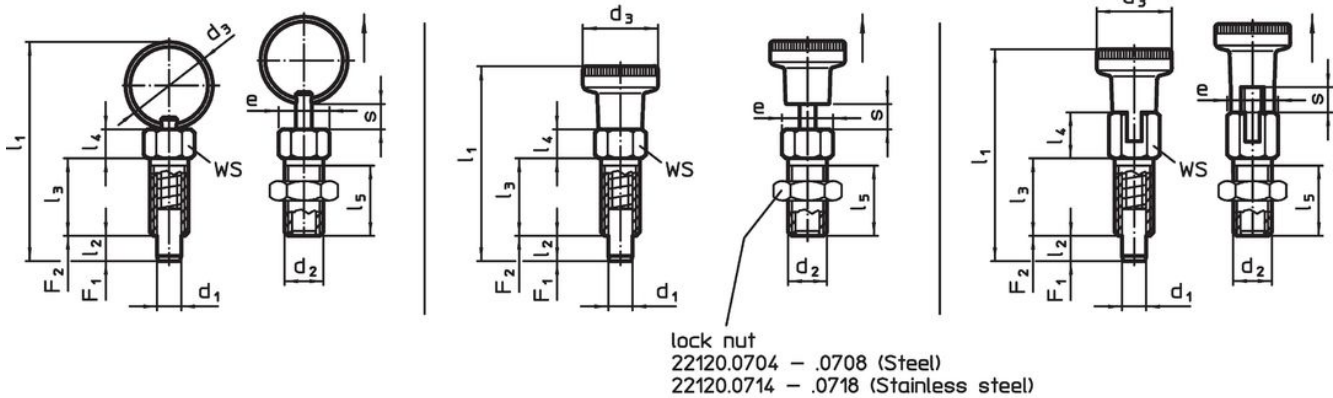
Notes

Lock nuts have to be purchased separately.

Further products

- Locating Bushings, for index bolts and index plungers

Drawing



picture 1

picture 2

picture 3

Order information



Dimensions										WS	Tightening torque max.	Spring load ¹⁾		Temperature		Weight [g]	Art. No.
d ₁	d ₂	d ₃	e	l ₁	l ₂ min.	l ₃	l ₄	l ₅	s min.			F ₁	F ₂	min.	max.		
[mm]										[mm]	[Nm]	[N]	[N]	[°C]		[g]	
with pull-ring, without locking – picture 1, Steel																	
3	M 6	14	6.9	34.0	3.5	12	4.5	10.0	3.5	6	2	3	12	–	250	3.2	22120.0723
4	M 6	14	6.9	34.5	4.0	12	4.5	10.0	4.0	6	2	3	12	–	250	3.6	22120.0724
5	M 8	18	9.2	45.0	5.0	16	6.0	13.5	5.0	8	7	5	24	–	250	8.4	22120.0725
6	M10	24	11.5	57.5	6.0	20	7.5	17.0	6.0	10	15	5	21	–	250	17.0	22120.0726
8	M12	30	13.8	71.0	8.0	24	9.0	20.5	8.0	12	20	6	22	–	250	31.0	22120.0728
with knob, without locking – picture 2, Steel																	
3	M 6	12	6.9	30.0	3.5	12	4.5	10.0	3.5	6	2	3	12	-30	80	3.6	22120.0743
4	M 6	12	6.9	30.5	4.0	12	4.5	10.0	4.0	6	2	3	12	-30	80	3.8	22120.0744
5	M 8	16	9.2	40.0	5.0	16	6.0	13.5	5.0	8	7	5	24	-30	80	9.2	22120.0745
6	M10	18	11.5	49.0	6.0	20	7.5	17.0	6.0	10	15	5	21	-30	80	18.0	22120.0746
8	M12	21	13.8	59.0	8.0	24	9.0	20.5	8.0	12	20	6	22	-30	80	31.0	22120.0748

¹⁾ statistical average value

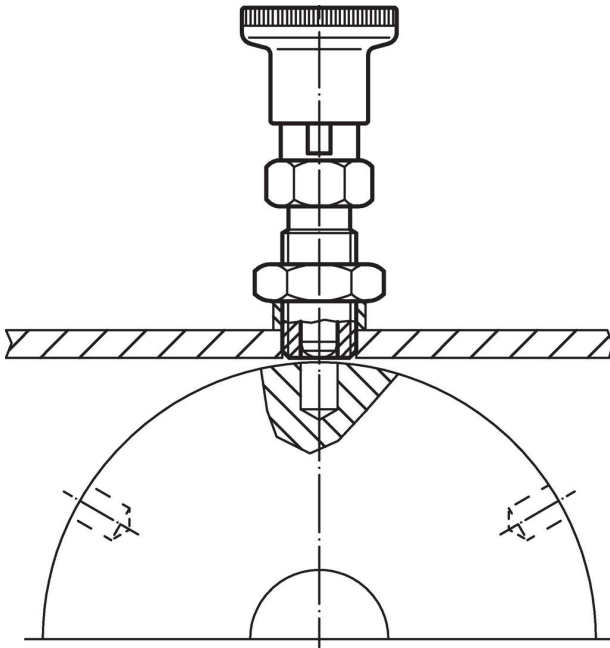
d ₁ -0.05	d ₂	d ₃	e	Dimensions						s min.	WS [mm]	Tightening torque max. [Nm]	Spring load ¹⁾ [N]		Temperature [°C]		Weight [g]	Art. No.
				l ₁	l ₂ min.	l ₃	l ₄	l ₅	F ₁ ~				F ₂ ~	min.	max.			
[mm]																		
with knob and locking – picture 3, Steel																		
3	M 6	12	6.9	32.5	3.5	12	7.0	10.0	3.5	6	2	3	12	-30	80	3.8	22120.0763	
4	M 6	12	6.9	33.0	4.0	12	7.0	10.0	4.0	6	2	3	12	-30	80	4.2	22120.0764	
5	M 8	16	9.2	43.5	5.0	16	9.5	13.5	5.0	8	7	5	24	-30	80	9.8	22120.0765	
6	M10	18	11.5	52.0	6.0	20	10.5	17.0	6.0	10	15	5	21	-30	80	18.0	22120.0766	
8	M12	21	13.8	63.5	8.0	24	13.5	20.5	8.0	12	20	6	22	-30	80	33.0	22120.0768	
with pull-ring, without locking – picture 1, Stainless steel																		
3	M 6	14	6.9	34.0	3.5	12	4.5	10.0	3.5	6	2	3	12	–	250	3.2	22120.0773	
4	M 6	14	6.9	34.5	4.0	12	4.5	10.0	4.0	6	2	3	12	–	250	3.6	22120.0774	
5	M 8	18	9.2	45.0	5.0	16	6.0	13.5	5.0	8	7	5	24	–	250	8.4	22120.0775	
6	M10	24	11.5	57.5	6.0	20	7.5	17.0	6.0	10	15	5	21	–	250	17.0	22120.0776	
8	M12	30	13.8	71.0	8.0	24	9.0	20.5	8.0	12	20	6	22	–	250	31.0	22120.0778	
with knob, without locking – picture 2, Stainless steel																		
3	M 6	12	6.9	30.0	3.5	12	4.5	10.0	3.5	6	2	3	12	-30	80	3.6	22120.0783	
4	M 6	12	6.9	30.5	4.0	12	4.5	10.0	4.0	6	2	3	12	-30	80	3.8	22120.0784	
5	M 8	16	9.2	40.0	5.0	16	6.0	13.5	5.0	8	7	5	24	-30	80	9.2	22120.0785	
6	M10	18	11.5	49.0	6.0	20	7.5	17.0	6.0	10	15	5	21	-30	80	18.0	22120.0786	
8	M12	21	13.8	59.0	8.0	24	9.0	20.5	8.0	12	20	6	22	-30	80	31.0	22120.0788	
with knob and locking – picture 3, Stainless steel																		
3	M 6	12	6.9	32.5	3.5	12	7.0	10.0	3.5	6	2	3	12	-30	80	3.8	22120.0793	
4	M 6	12	6.9	33.0	4.0	12	7.0	10.0	4.0	6	2	3	12	-30	80	4.2	22120.0794	
5	M 8	16	9.2	43.5	5.0	16	9.5	13.5	5.0	8	7	5	24	-30	80	9.8	22120.0795	
6	M10	18	11.5	52.0	6.0	20	10.5	17.0	6.0	10	15	5	21	-30	80	18.0	22120.0796	
8	M12	21	13.8	63.5	8.0	24	13.5	20.5	8.0	12	20	6	22	-30	80	33.0	22120.0798	

¹⁾ statistical average value

Accessories

Image	Dimensions		Wrench size		Weight [g]	Art. No.
	d ₂ [mm]		[mm]			
Steel						
	M 6		10		1.3	22120.0704
	M 8		13		2.8	22120.0705
	M10		16		5.3	22120.0706
	M12		18		7.6	22120.0708
Stainless steel						
	M 6		10		1.3	22120.0714
	M 8		13		2.8	22120.0715
	M10		16		5.3	22120.0716
	M12		18		7.6	22120.0718

Application example



Compliance

For detailed compliance information please select the desired article number.