

Spring Plungers · smooth, with collar and pin EH 22080.



Product Description

To be used for locating, tightening, as an assembly support, for applying pressure, as a detent, for ejection or as a shock absorber.

Material

- Pin**
- Stainless steel 1.4305
 - Thermoplastic POM, white

Body

- Stainless steel 1.4303

Spring

- Stainless steel

Assembly

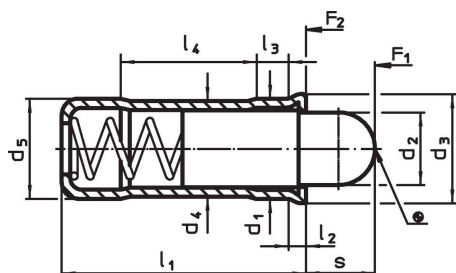
A tolerance of H7 is recommended for the locating hole of d_1 .

More information

Notes

Special types on request.
Spring plungers are specially tested for spring range and forces.

Drawing

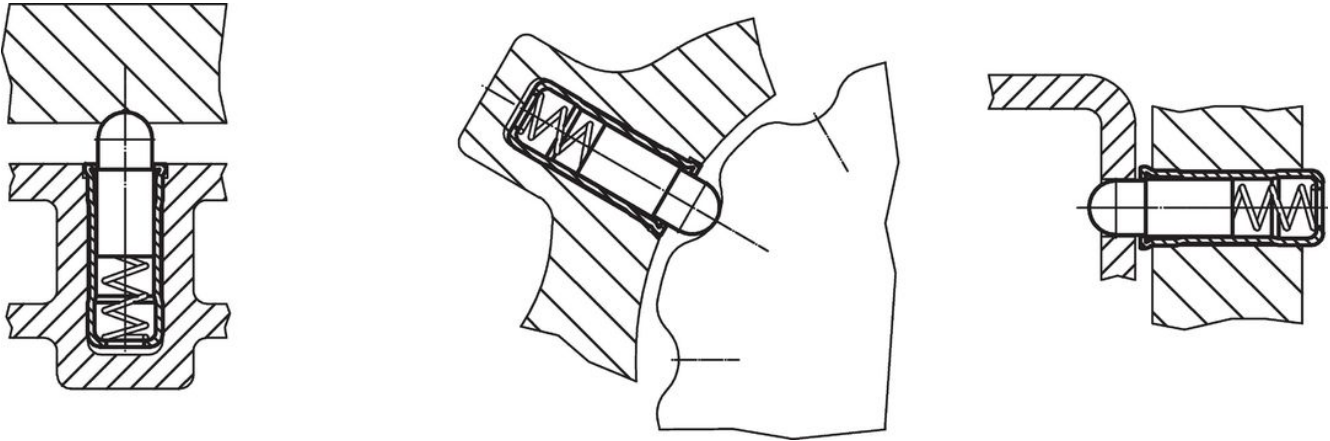


Order information

| Dimensions | | | | | | | | | | Stroke s | Spring load ¹⁾ | | Temperature | | Location hole H7 | Weight [g] | Art. No. |
|--|----------------|----------------|----------------|----------------|----------------|----------------|----------------|----------------|----------------|-------------|---------------------------|------|-------------|------|---------------------|----------------------------|----------|
| d ₁ | d ₂ | d ₃ | d ₄ | d ₅ | l ₁ | l ₂ | l ₃ | l ₄ | F ₁ | | F ₂ | min. | max. | | | | |
| +0.1 +0.04 | | | | ±0.04 | | ~ | ~ | ~ | [mm] | [N] | [N] | [°C] | [°C] | [mm] | [g] | | |
| body and pin from stainless steel | | | | | | | | | | | | | | | | | |
| 4 | 2.8 | 4.6 | 3.85 | 4 | 10.7 | 0.9 | 1.8 | 5.6 | 2.7 | 3.0 | 8.2 | - | 250 | 4 | 0.7 | 22080.0104 | |
| 5 | 3.8 | 5.6 | 4.85 | 5 | 12.0 | 0.9 | 2.1 | 6.0 | 4.0 | 3.3 | 9.0 | - | 250 | 5 | 1.1 | 22080.0105 | |
| 6 | 4.8 | 6.5 | 5.85 | 6 | 15.0 | 1.0 | 2.3 | 8.2 | 5.5 | 6.1 | 12.0 | - | 250 | 6 | 2.0 | 22080.0106 | |
| 8 | 6.2 | 8.5 | 7.55 | 8 | 18.0 | 1.1 | 2.9 | 9.5 | 6.5 | 9.0 | 20.1 | - | 250 | 8 | 4.0 | 22080.0108 | |
| 10 | 8.1 | 11.0 | 9.55 | 10 | 26.0 | 1.5 | 4.2 | 14.3 | 8.0 | 16.2 | 29.0 | - | 250 | 10 | 9.0 | 22080.0110 | |
| stainless steel body, thermoplastic pin | | | | | | | | | | | | | | | | | |
| 4 | 2.8 | 4.6 | 3.85 | 4 | 10.7 | 0.9 | 1.8 | 5.6 | 2.7 | 3.0 | 8.2 | -30 | 50 | 4 | 0.5 | 22080.0124 | |
| 5 | 3.8 | 5.6 | 4.85 | 5 | 12.0 | 0.9 | 2.1 | 6.0 | 4.0 | 3.3 | 9.0 | -30 | 50 | 5 | 0.7 | 22080.0125 | |
| 6 | 4.8 | 6.5 | 5.85 | 6 | 15.0 | 1.0 | 2.3 | 8.2 | 5.5 | 6.1 | 12.0 | -30 | 50 | 6 | 1.2 | 22080.0126 | |
| 8 | 6.2 | 8.5 | 7.55 | 8 | 18.0 | 1.1 | 2.9 | 9.5 | 6.5 | 9.0 | 20.1 | -30 | 50 | 8 | 2.3 | 22080.0128 | |
| 10 | 8.1 | 11.0 | 9.55 | 10 | 26.0 | 1.5 | 4.2 | 14.3 | 8.0 | 16.2 | 29.0 | -30 | 50 | 10 | 4.8 | 22080.0130 | |

¹⁾ statistical average value

Application example



Compliance

RoHS compliant

Compliant according to Directive 2011/65/EU and Directive 2015/863.

Does not contain SVHC substances

No SVHC substances with more than 0.1% w/w contained - SVHC list [REACH] as of 27.06.2024.

Does not contain Proposition 65 substances

No Proposition 65 substances included.

<https://www.P65Warnings.ca.gov/>

Free from Conflict Minerals

This product does not contain any substances designated as "conflict minerals" such as tantalum, tin, gold or tungsten from the Democratic Republic of Congo or adjacent countries.