

## Spring Plungers • smooth version EH 22070.



### Product Description

Especially designed for the use in tool-making.  
Usable as ejection pins and spring stops.  
It is impossible for the complete spring plunger or any of its individual parts to come out of the retaining bore.

### Material

- Pin**
- Steel, case-hardened, blackened
  - Stainless Steel 1.4305, nitrided

### Body

- Free cutting steel, blackened
- Stainless steel 1.4305

### Spring

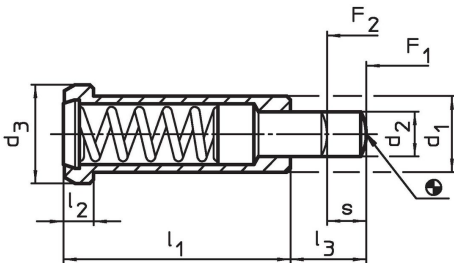
- Stainless steel

### More information

### Notes

Customized design on request.  
Spring plungers are specially tested for spring range and forces.

### Drawing

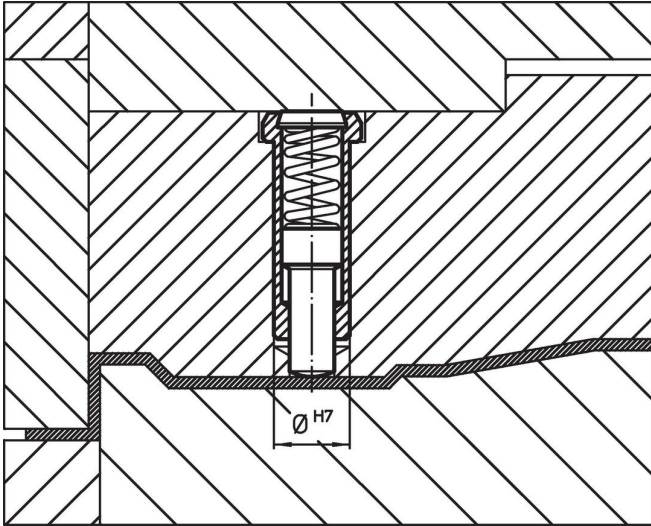


### Order information

d <sub>1</sub> -0.05	d <sub>2</sub>	Dimensions				Stroke s [mm]	Spring load <sup>1)</sup>		max. [°C]	Location hole H7 [mm]	[g]	Art. No.
		d <sub>3</sub>	l <sub>1</sub>	l <sub>2</sub>	l <sub>3</sub>		F <sub>1</sub> ~ [N]	F <sub>2</sub> ~ [N]				
<b>free cutting steel, standard spring load</b>												
6	2.7	8	20	3.2	6	3.5	10	22	250	6	4.0	<a href="#">22070.0006</a>
8	3.9	10	24	3.2	8	4.5	30	88	250	8	7.4	<a href="#">22070.0008</a>
10	5.9	13	30	4.0	10	5.5	42	110	250	10	15.0	<a href="#">22070.0010</a>
12	7.9	16	36	5.0	12	6.5	50	130	250	12	27.0	<a href="#">22070.0012</a>
<b>stainless steel, standard spring load</b>												
6	2.7	8	20	3.2	6	3.5	10	22	250	6	4.0	<a href="#">22070.0106</a>
8	3.9	10	24	3.2	8	4.5	30	88	250	8	7.5	<a href="#">22070.0108</a>
10	5.9	13	30	4.0	10	5.5	42	110	250	10	15.0	<a href="#">22070.0110</a>
12	7.9	16	36	5.0	12	6.5	50	130	250	12	27.0	<a href="#">22070.0112</a>

<sup>1)</sup> statistical average value

Application example



Compliance

For detailed compliance information please select the desired article number.