

Spring Plungers · with pin and internal hexagon

EH 22030.



Product Description

Spring plungers can be used for locating or for applying pressure, as a detent or for ejection.

Material

Pin

- Free cutting steel, hardened, blackened
- Stainless Steel 1.4305, nitrided

Body

- Free cutting steel, blackened
- Stainless steel 1.4305

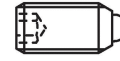
Spring

- Stainless steel

Characteristic

Standard spring load: no marking

Heavy spring load: marked with two lines



Standard spring load



Heavy spring load

More information

Notes

Customized design on request.

Spring plungers are specially tested for spring range and forces.

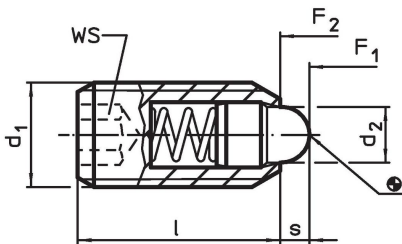
References

Thread lock on request, please refer to appendix - Technical Data -

Further products

- Holders, for spring plungers
- Spring Plungers, with pin and internal hexagon - INCH

Drawing



Order information

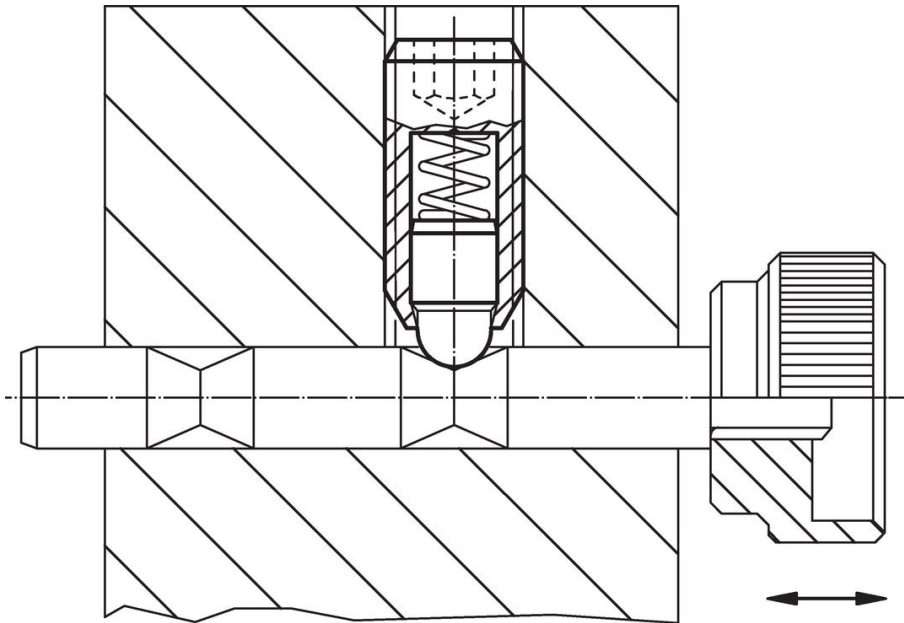
Dimensions			WS	Stroke s	Spring load ¹⁾		max. [°C]	[g]	Art. No.
d ₁	d ₂	l			F ₁ ~	F ₂ ~			
[mm]			[mm]	[mm]	[N]	[N]			
free cutting steel, standard spring load									
M 4	1.8	12	2.0	1.5	4.5	12.5	250	0.6	22030.0104
M 5	2.4	14	2.5	2.0	5.0	13.0	250	1.2	22030.0105
M 6	2.7	15	3.0	2.0	6.0	17.0	250	1.8	22030.0106
M 8	3.8	18	4.0	2.0	16.0	33.0	250	4.1	22030.0108
M10	4.5	23	5.0	2.5	19.0	42.0	250	8.4	22030.0110
M12	6.2	26	6.0	3.5	22.0	57.0	250	13.0	22030.0112
M16	8.5	33	8.0	4.5	38.0	78.0	250	32.0	22030.0116
M20	10.0	43	10.0	6.5	39.0	81.0	250	68.0	22030.0120
M24	13.0	48	12.0	8.0	72.0	155.0	250	106.0	22030.0124
free cutting steel, heavy spring load									
M 6	2.7	15	3.0	2.0	11.0	25.0	250	1.9	22030.0146
M 8	3.8	18	4.0	2.0	23.0	59.0	250	4.1	22030.0148
M10	4.5	23	5.0	2.5	20.0	54.0	250	8.4	22030.0150

¹⁾ statistical average value

d ₁	Dimensions		WS [mm]	Stroke s [mm]	Spring load ¹⁾		max. [°C]	[g]	Art. No.
	d ₂ [mm]	l			F ₁ ~ [N]	F ₂ ~			
M12	6.2	26	6.0	3.5	38.0	96.0	250	13.0	22030.0152
M16	8.5	33	8.0	4.5	50.0	100.0	250	32.0	22030.0156
M20	10.0	43	10.0	6.5	52.0	133.0	250	68.0	22030.0160
M24	13.0	48	12.0	8.0	91.0	223.0	250	106.0	22030.0164
stainless steel, standard spring load									
M 4	1.8	12	2.0	1.5	4.5	12.5	250	0.6	22030.0304
M 5	2.4	14	2.5	2.0	5.0	13.0	250	1.2	22030.0305
M 6	2.7	15	3.0	2.0	6.0	17.0	250	1.9	22030.0306
M 8	3.8	18	4.0	2.0	16.0	33.0	250	4.2	22030.0308
M10	4.5	23	5.0	2.5	19.0	42.0	250	8.4	22030.0310
M12	6.2	26	6.0	3.5	22.0	57.0	250	13.0	22030.0312
M16	8.5	33	8.0	4.5	38.0	78.0	250	32.0	22030.0316
M20	10.0	43	10.0	6.5	39.0	81.0	250	68.0	22030.0320
M24	13.0	48	12.0	8.0	72.0	155.0	250	104.0	22030.0324
stainless steel, heavy spring load									
M 6	2.7	15	3.0	2.0	11.0	25.0	250	1.9	22030.0346
M 8	3.8	18	4.0	2.0	23.0	59.0	250	4.2	22030.0348
M10	4.5	23	5.0	2.5	20.0	54.0	250	8.4	22030.0350
M12	6.2	26	6.0	3.5	38.0	96.0	250	13.0	22030.0352
M16	8.5	33	8.0	4.5	50.0	100.0	250	32.0	22030.0356
M20	10.0	43	10.0	6.5	52.0	133.0	250	68.0	22030.0360
M24	13.0	48	12.0	8.0	91.0	223.0	250	108.0	22030.0364

¹⁾ statistical average value

Application example



Compliance

For detailed compliance information please select the desired article number.