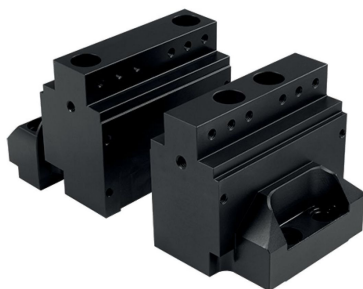


Jaws for Five-Sided Machining

EH 1704.



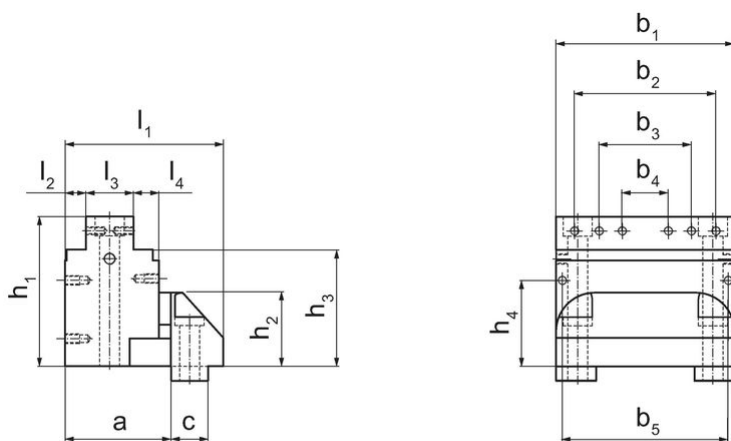
Product Description

- Particularly suitable for five-side machining
- Better accessibility for tools
- Ground clamping surfaces
- Additional thread for parallels
- Accuracy through pull-down
- Stability through form-locking

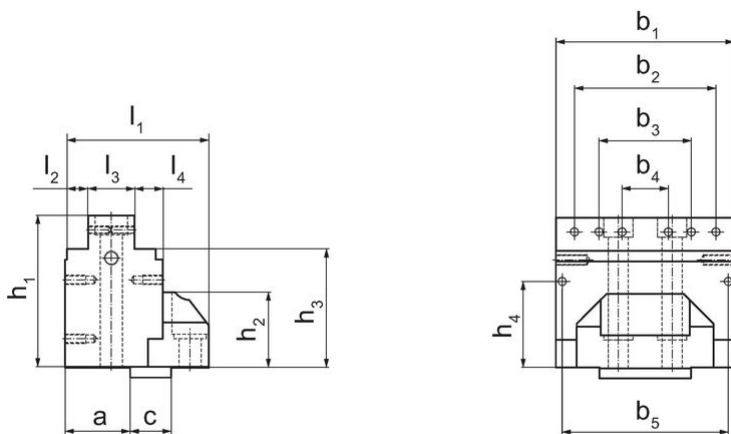
Material

- steel, plasma nitrided

Drawing



picture 1



picture 2

Order information

Jaw width [mm]	Dimensions															[kg]	Art. No.
	b ₁	b ₂	b ₃	b ₄	b ₅	l ₁	l ₂	l ₃	l ₄	h ₁	h ₂	h ₃	h ₄	a	c		
Jaw, fixed – picture 1																	
125	116	92	60	30	108	103	13.5	31	16.5	97.5	48	76	56	69	24	6	1704.100
Jaw, movable – picture 2																	
125	116	92	60	30	108	87	13.5	30	16.5	97.5	48	76	56	38	24	5	1704.200

Compliance

RoHS compliant

Compliant according to Directive 2011/65/EU and Directive 2015/863.

Does not contain SVHC substances

No SVHC substances with more than 0.1% w/w contained - SVHC list [REACH] as of 27.06.2024.

Does not contain Proposition 65 substances

No Proposition 65 substances included.

<https://www.P65Warnings.ca.gov/>

Free from Conflict Minerals

This product does not contain any substances designated as "conflict minerals" such as tantalum, tin, gold or tungsten from the Democratic Republic of Congo or adjacent countries.