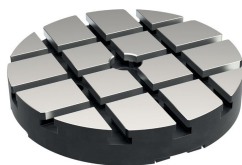


Base Plates

EH 1102.100 - EH 1102.200



Product Description

Material

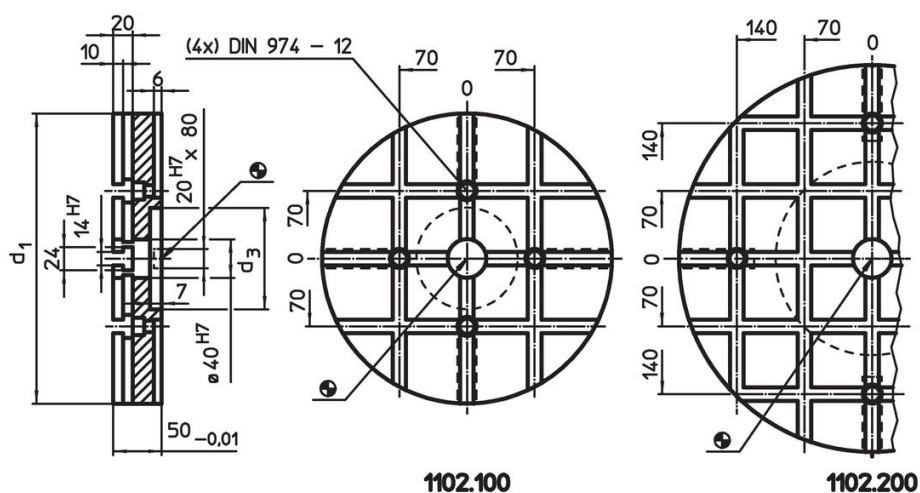
- Steel, hardened, ground

More information

Notes


Customized design on request.

Drawing



Slot spacing $70 \pm 0,01$.

Order information

System	Dimensions		Number of T-slots	 [kg]	Art. No.
	d_1	d_3			
V70	300	105	3 x 3	21	1102.100
V70	400	200	5 x 5	37	1102.200

Application example



Compliance

RoHS compliant

Contains lead - compliant according to exceptions 6a / 6b / 6c.

Contains SVHC substances >0,1% w/w

Contains lead - SVHC list [REACH] as of 27.06.2024.

Contains Proposition 65 substances



Lead can cause cancer and reproductive harm from exposure
<https://www.P65Warnings.ca.gov/>

Free from Conflict Minerals

This product does not contain any substances designated as "conflict minerals" such as tantalum, tin, gold or tungsten from the Democratic Republic of Congo or adjacent countries.