

Locating Pins

EH 1040.300 - EH 1040.700

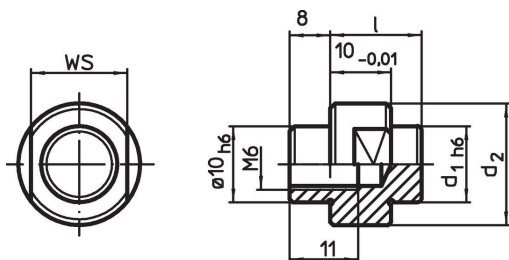


Product Description


Material

- Steel, case-hardened, ground

Drawing



Order information

System	Dimensions			WS [mm]	 [g]	Art. No.
	d ₁	d ₂ [mm]	l			
V40	6	15	14	13	18	1040.300
V40	10	19	14	13	25	1040.500
V40	13	19	15	17	30	1040.700

Compliance

RoHS compliant

Compliant according to Directive 2011/65/EU and Directive 2015/863.

Does not contain SVHC substances

No SVHC substances with more than 0.1% w/w contained - SVHC list [REACH] as of 23.01.2024.

Does not contain Proposition 65 substances

No Proposition 65 substances included.

<https://www.P65Warnings.ca.gov/>

Free from Conflict Minerals

This product does not contain any substances designated as "conflict minerals" such as tantalum, tin, gold or tungsten from the Democratic Republic of Congo or adjacent countries.