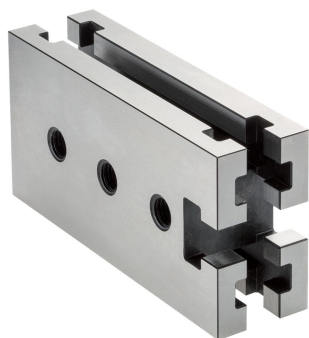


Mounting Blocks

EH 1011.200 - EH 1111.300



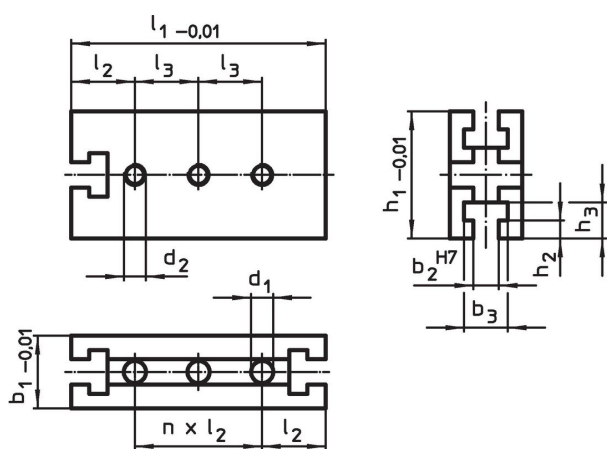
Product Description

This mounting element is a system part of the T-slot system.


Material

- Steel, hardened, ground

Drawing



Order information

System	Dimensions											Amount n	 [g]	Art. No.
	b ₁	l ₁	b ₂	b ₃	l ₂	l ₃	h ₁	h ₂	h ₃	d ₁	d ₂			
V40	25	80	10	17.2	20	–	40	6.5	12.5	8.25	–	3	339	1011.200
V40	25	120	10	17.2	20	–	40	6.5	12.5	8.25	–	5	527	1011.300
V70	40	140	14	24.0	35	35	70	10.0	20.0	12.25	M12	3	2060	1111.200
V70	40	210	14	24.0	35	70	70	10.0	20.0	12.25	M12	5	3246	1111.300

Compliance

RoHS compliant

Compliant according to Directive 2011/65/EU and Directive 2015/863.

Does not contain SVHC substances

No SVHC substances with more than 0.1% w/w contained - SVHC list [REACH] as of 27.06.2024.

Does not contain Proposition 65 substances

No Proposition 65 substances included.

<https://www.P65Warnings.ca.gov/>

Free from Conflict Minerals

This product does not contain any substances designated as "conflict minerals" such as tantalum, tin, gold or tungsten from the Democratic Republic of Congo or adjacent countries.