

Tubular Handles • straight

24321.0475



Product Description

Tubular handles are used, for example, on machine doors.

Material

Handle

- Aluminium, plastic coated, similar to RAL 9005 black, matt structure

Handle shank

- Zinc die-cast
- Zinc die-cast, plastic coated, black, similar to RAL 9005, matt structure

Cap

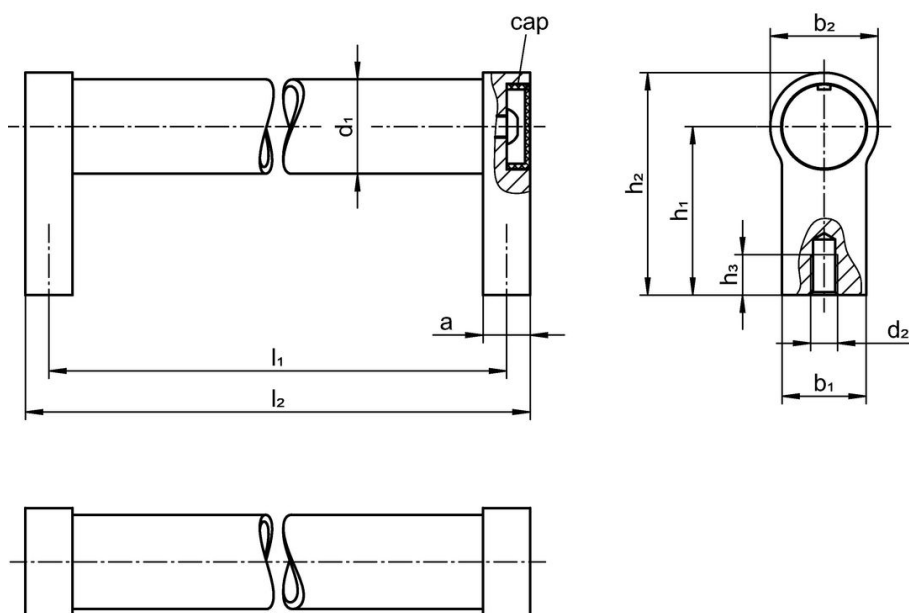
- Plastic, light grey

More information

Notes

Special types on request.

Drawing



Order information

Dimensions									[g]	Art. No.
d ₁	l ₁ ±0.25	a	b ₁	d ₂ [mm]	h ₁	h ₂	h ₃ min.	l ₂		
black similar to RAL 9005										
30	300	17	27	M8	51	68	15	317	381	24321.0475

Compliance

RoHS compliant

Compliant according to Directive 2011/65/EU and Directive 2015/863.

Does not contain SVHC substances

No SVHC substances with more than 0.1% w/w contained - SVHC list [REACH] as of 23.01.2024.

Does not contain Proposition 65 substances

No Proposition 65 substances included.

<https://www.P65Warnings.ca.gov/>

Free from Conflict Minerals

This product does not contain any substances designated as "conflict minerals" such as tantalum, tin, gold or tungsten from the Democratic Republic of Congo or adjacent countries.