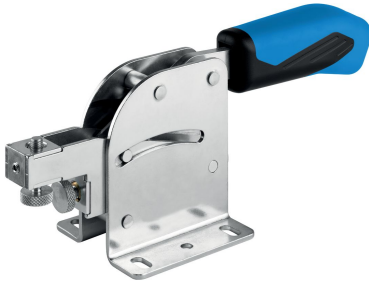


Combination Clamps · with horizontal base

23330.4003



Product Description

The combination clamp combines a toggle clamp push-pull type and a vertical toggle clamp in one clamp. Thus the use of different toggle clamps is not necessary. The horizontal and vertical clamping movement is achieved by simple operation using an ergonomic handle. Simultaneous exact positioning and secure clamping of the component is guaranteed.

The toggle clamps are manufactured from high quality components and are designed for maintenance-free continuous use.

An oil resistant ergonomic 2-component handle, with slip-proof, soft surface and large grip area for high ease of use.

Material

Clamp

- Steel, zinc-plated by galvanization, passivated

Rivet

- Stainless steel

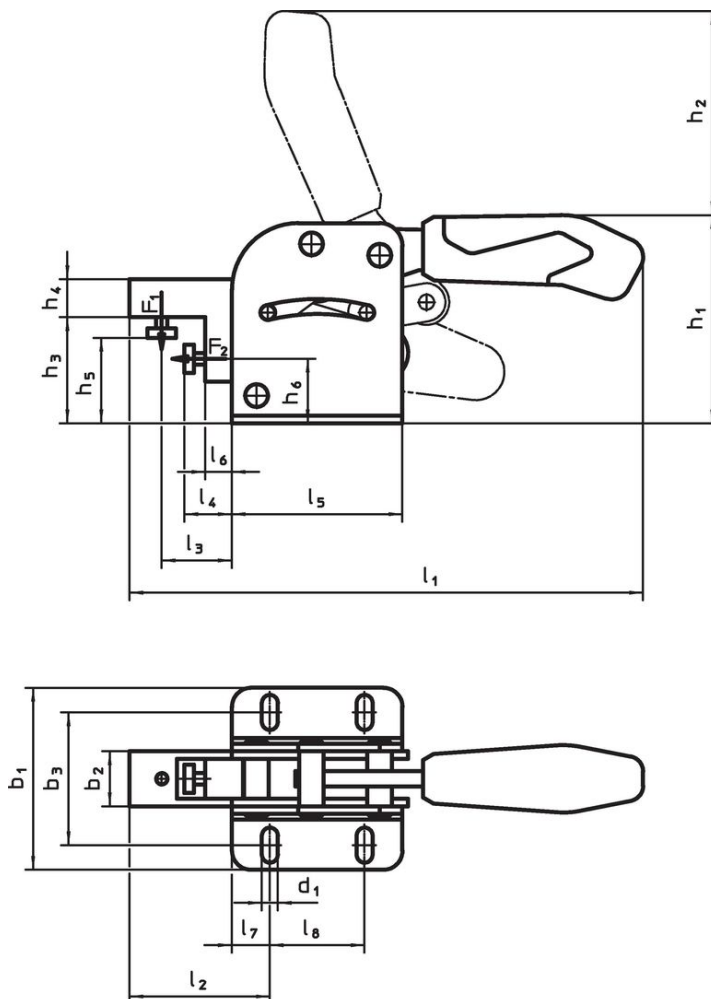
Handle

- plastic

Clamping screw

- Steel, tempered, zinc-plated by galvanization

Drawing



Order information

Nominal size	Dimensions																		Holding force		Temperature		Art. No.				
	d ₁	b ₁	b ₂	b ₃	h ₁	h ₂	h ₃	h ₄	h ₅ min.	h ₅ max.	h ₆	l ₁	l ₂	l ₃	l ₄ min.	l ₄ max.	l ₅	l ₆	l ₇	l ₈	F ₁	F ₂		min.	max.	[g]	
Steel																											
3	6.5	75	19.5	48.5 – 61.5	94	87	46	16	30	40	28	219	56	32	14	24	75	9	12.5	50	2	2	-10	80	714	23330.4003	

Compliance

RoHS compliant

Compliant according to Directive 2011/65/EU and Directive 2015/863.

Does not contain SVHC substances

No SVHC substances with more than 0.1% w/w contained - SVHC list [REACH] as of 23.01.2024.

Does not contain Proposition 65 substances

No Proposition 65 substances included.

<https://www.P65Warnings.ca.gov/>

Free from Conflict Minerals

This product does not contain any substances designated as "conflict minerals" such as tantalum, tin, gold or tungsten from the Democratic Republic of Congo or adjacent countries.