

Thrust Screws • with plastic pad

22760.0645



Product Description

Thrust screws can be used for a gentle clamping or pressing of thread spindles, axes, shafts and surface treated parts.

Material

Pad

- Thermoplastic POM, white

Screw

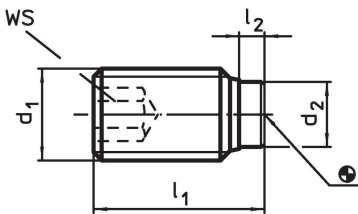
- Stainless steel 1.4305

More information

Further products

- Thrust Screws, with brass pad

Drawing



Order information

| d ₁ | Dimensions | | d ₂ | WS | Temperature | | Weight | Art. No. |
|------------------------|----------------|----------------|----------------|------|-------------|------|--------|------------|
| | l ₁ | l ₂ | | | min. | max. | | |
| | [mm] | [mm] | | [mm] | [°C] | | [g] | |
| Stainless steel | | | | | | | | |
| M4 | 13 | 1 | 2 | 2 | -30 | 80 | 0.7 | 22760.0645 |

Compliance

RoHS compliant

Compliant according to Directive 2011/65/EU and Directive 2015/863.

Does not contain SVHC substances

No SVHC substances with more than 0.1% w/w contained - SVHC list [REACH] as of 23.01.2024.

Does not contain Proposition 65 substances

No Proposition 65 substances included.

<https://www.P65Warnings.ca.gov/>

Free from Conflict Minerals

This product does not contain any substances designated as "conflict minerals" such as tantalum, tin, gold or tungsten from the Democratic Republic of Congo or adjacent countries.