

## Seating Pins • partially DIN 6321 (old standard)

22630.0006



### Product Description

Seating pins according to DIN 6321 (old standard) can be used as supports for workpieces but also as stops and feet.  
The bearing surface has no centre.

### Material

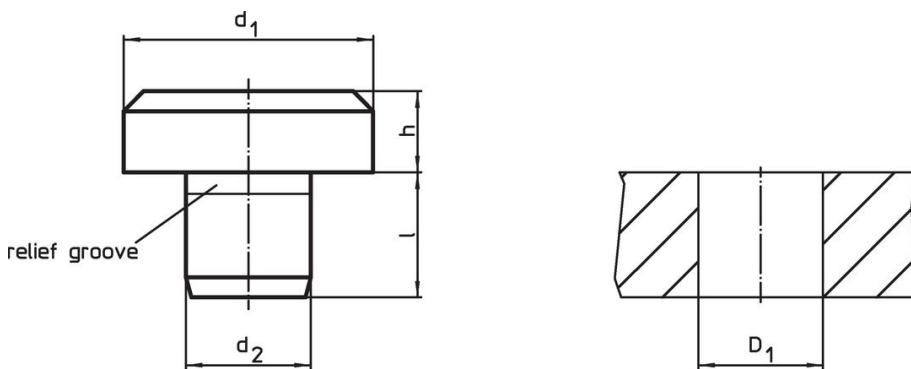
- Tool steel, hardened, ground

### More information

### Further products

- Seating Pins, DIN 6321

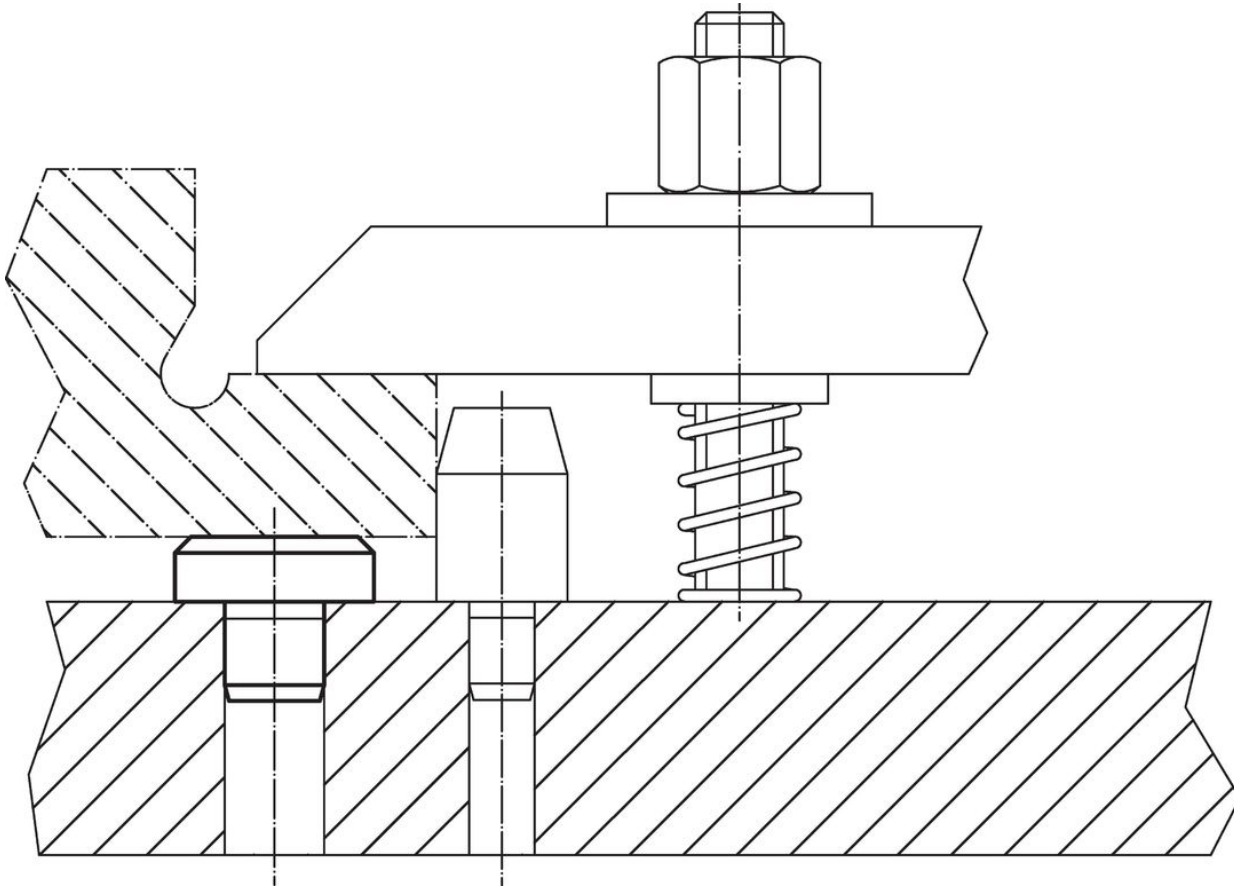
### Drawing



### Order information

Dimensions				Location hole		[g]	Art. No.
d <sub>1</sub>	h h9	d <sub>2</sub> n6	l	D <sub>1</sub> H7	[mm]		
[mm]							
DIN 6321, old standard							
25	20	12	14		12	88	22630.0006

Application example



Compliance

**RoHS compliant**

Compliant according to Directive 2011/65/EU and Directive 2015/863.

**Does not contain SVHC substances**

No SVHC substances with more than 0.1% w/w contained - SVHC list [REACH] as of 23.01.2024.

**Does not contain Proposition 65 substances**

No Proposition 65 substances included.

<https://www.P65Warnings.ca.gov/>

**Free from Conflict Minerals**

This product does not contain any substances designated as "conflict minerals" such as tantalum, tin, gold or tungsten from the Democratic Republic of Congo or adjacent countries.