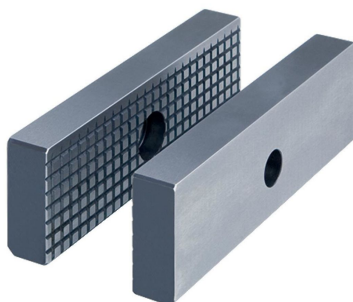


## Jaws • ribbed

1701.250



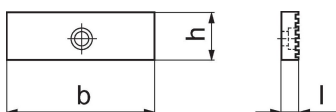
### Product Description

- Standard jaws with small surface area
- In order to increase specific surface pressure
- Please order mounting screws separately (Art. No. 1701.300)
- Supplied as a pair

### Material

- Steel, hardened

### Drawing



### Order information

Jaw width	Dimensions				Art. No.
[mm]	b	l	h	[g]	
125	125	15	40	1200	1701.250

### Compliance

#### RoHS compliant

Compliant according to Directive 2011/65/EU and Directive 2015/863.

#### Does not contain SVHC substances

No SVHC substances with more than 0.1% w/w contained - SVHC list [REACH] as of 23.01.2024.

#### Does not contain Proposition 65 substances

No Proposition 65 substances included.

<https://www.P65Warnings.ca.gov/>

#### Free from Conflict Minerals

This product does not contain any substances designated as "conflict minerals" such as tantalum, tin, gold or tungsten from the Democratic Republic of Congo or adjacent countries.