

Step Jaws

1701.110



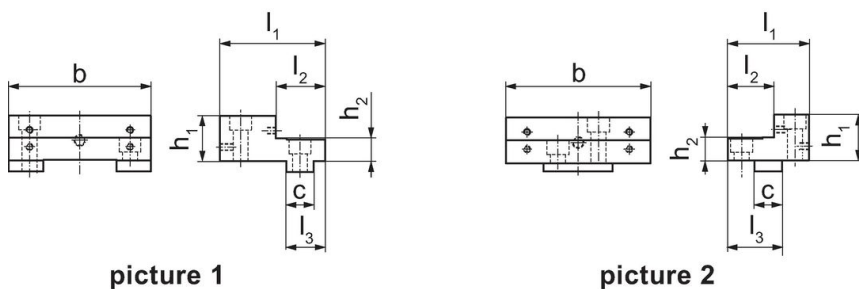
Product Description

- Top face and side face, with thread for mounting of parallel jaws
- Ground clamping surfaces
- Additional threads for parallels and for mounting the interchangeable jaws (Art. No. 1701.250-1701.280) on the smooth side
- Mountings for click system (Art. No. 1701.190-1701.200) on both sides of the jaw

Material

- Steel, hardened

Drawing



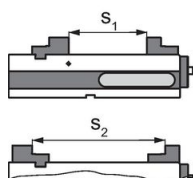
picture 1

picture 2

Order information

Jaw width [mm]	Dimensions							[g]	Art. No.
	b	l ₁	l ₂	l ₃	h ₁	h ₂	c		
Jaw, movable – picture 2									
125	124.4	70	40	47	39.5	20	24	2000	1701.110

Application example



	MS 125-S	MS 125-M	MS 125-L
Clamping width s ₁	0 - 62	0 - 182	0 - 312
Clamping width s ₂	85 - 193	131 - 313	88 - 443

Compliance

RoHS compliant

Compliant according to Directive 2011/65/EU and Directive 2015/863.

Does not contain SVHC substances

No SVHC substances with more than 0.1% w/w contained - SVHC list [REACH] as of 23.01.2024.

Does not contain Proposition 65 substances

No Proposition 65 substances included.

<https://www.P65Warnings.ca.gov/>

Free from Conflict Minerals

This product does not contain any substances designated as "conflict minerals" such as tantalum, tin, gold or tungsten from the Democratic Republic of Congo or adjacent countries.